

19074 PAN File Report: Panasonic VBHN325SA 16 Module

Report Number: 19074-PR-E-001
Report Date: 2019-12-20
Test Period: 2019-11-04 to 2019-12-11
Project ID: 19074 (CFV), 2109144 (Customer PO)
Customer: Joshua Stein / Sandia National Laboratories / PO Box 5800 MS1484 / Albuquerque, NM 87185-1484

| | |
|--|---|
| Report Prepared by: Colin Sillerud – Project Engineer | Report Reviewed by: Jim Crimmins – General Manager |
|--|---|

1 Project Summary

CFV Solar conducted PAN file testing on one **VBHN325SA 16** module produced by **Panasonic**. I-V curves at multiple irradiance and temperature conditions were obtained on one sample per IEC 61853-1:2011. The PVsyst 6 single-diode model coefficients were derived with PANOpt®, a software developed at CFV.

2 Executive Summary of Results

The performance matrix data were scaled to prepare PAN file source data for the 325 W power class of the VBHN325SA 16 type. The “Measured STC” scaling method (explained in Procedures section) was used. Optimized PAN files were created for the specified module type and power class with PANOpt®, CFV’s proprietary software.

Table of Contents

| | | |
|-----|---|----|
| 1 | Project Summary..... | 1 |
| 2 | Executive Summary of Results | 1 |
| | Disclaimer and Conditions of Report Reproduction..... | 2 |
| 3 | Sample Information | 3 |
| 4 | Procedures | 5 |
| 4.1 | Electroluminescence Imaging..... | 5 |
| 4.2 | Preconditioning | 5 |
| 4.3 | MQT 06.1 Performance at STC..... | 5 |
| 4.4 | Performance Matrix | 6 |
| 4.5 | MQT 04 Temperature Coefficients | 8 |
| 4.6 | Performance Data Scaling..... | 8 |
| 4.7 | PAN file Generation and Optimization..... | 8 |
| 5 | Results..... | 9 |
| 5.1 | Electroluminescence Imaging..... | 9 |
| 5.2 | Preconditioning | 9 |
| 5.3 | MQT 06.1 Performance at STC..... | 10 |
| 5.4 | MQT 04 Temperature Coefficients..... | 10 |
| 5.5 | Performance Matrix | 12 |
| 5.6 | Performance Matrix Data Scaling | 13 |
| 5.7 | PAN file Generation and Optimization..... | 14 |

Disclaimer and Conditions of Report Reproduction

The results in this report relate only to the items tested.

This report contains no opinions, interpretations, or failure analysis.

This report may not be reproduced except in full, without the written consent of the testing laboratory.

3 Sample Information

Other samples were also tested as part of project 19074. For full information on all samples, refer to reports 19074-PR-E-002 through 19074-PR-E-009.

Labeling

| Module ID | SNL ID | Manufacturer | Module Type | Serial Number |
|-----------|----------|--------------|--------------|---------------|
| 19074-001 | 00003852 | Panasonic | VBHN325SA 16 | W0JH9NH02089 |

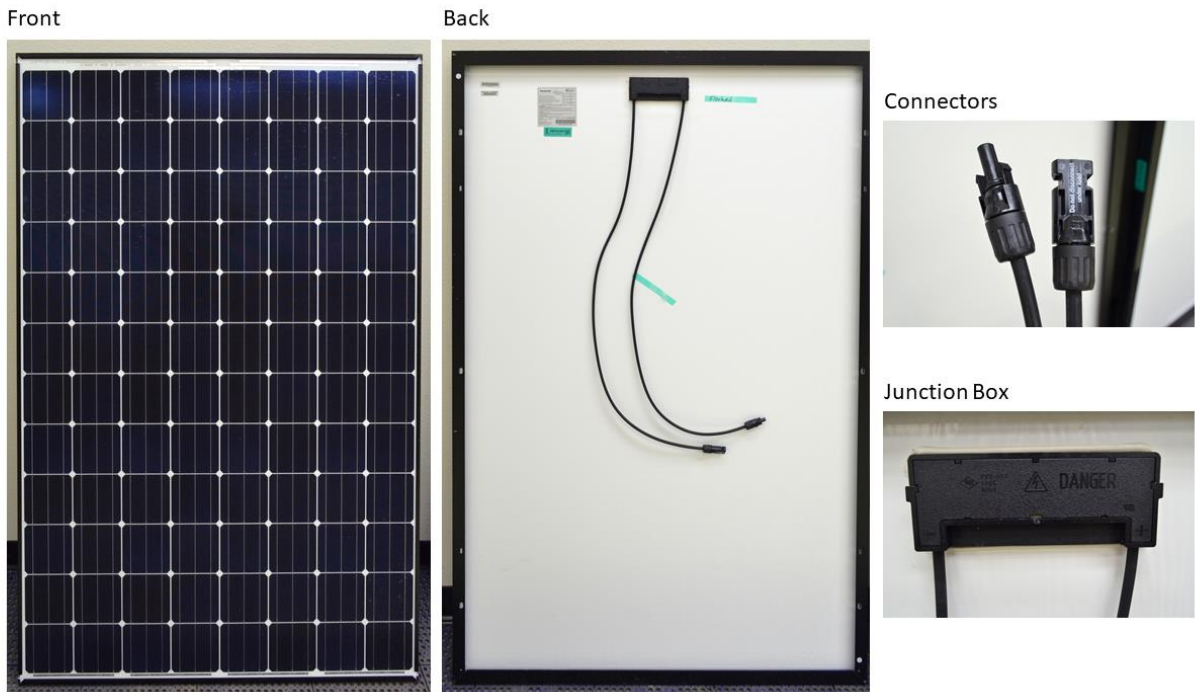
Constructional Details

| Module Type | Length [m] | Width [m] | Thickness [mm] |
|--------------|------------|-----------|----------------|
| VBHN325SA 16 | 1.590 | 1.053 | 35 |

Nameplate Values

| Module Type | Isc [A] | Voc [V] | Imp [A] | Vmp [V] | Pmp [W] | Max Sys Volt [V] | Fuse Rating [A] |
|--------------|---------|---------|---------|---------|---------|------------------|-----------------|
| VBHN325SA 16 | 6.03 | 69.6 | 5.65 | 57.6 | 325 | 600 | 15 |

Photographs



Nameplate(s)



Sampling

A single fielded sample of the type, VBHN325SA 16, was tested for this project and used in the PAN file creation.

4 Procedures

There were other tests included in project 19074. This report includes only the procedures relevant to the PAN file generation and Electroluminescence Imaging.

4.1 Electroluminescence Imaging

Electroluminescence (EL) images were taken with a Peltier-cooled CCD camera that has a resolution of 8.3 MPixels. A long pass filter blocked incoming light with wavelength below 850 nm. A constant DC bias was applied to the modules while the imaging was performed in the dark.

A relevant IEC document (IEC TS 60904-13:2018) has been published recently. The EL imaging was carried out at $1.0 \times I_{sc}$ per a procedure in this document, but this test is not yet included in CFV's scope of ISO 17025 accreditation.

4.2 Preconditioning

The sample was installed outdoors on a fixed rack in open circuit to receive a minimum of 40 kWh/m² of irradiation. The plane-of-array irradiance was measured with a calibrated pyranometer. CFV is ISO 17025-accredited to carry out Preconditioning per IEC 61215:2005. The preconditioning carried out for this project deviated from IEC 61215:2005 in that a higher irradiation dose was received (IEC 61215:2005 specifies a dose of 5.0 to 5.5 kWh/m²).

4.3 MQT 06.1 Performance at STC

Performance at STC test was carried out in conformity with IEC 61215-2:2016 MQT 06.1. CFV is ISO 17025-accredited to carry out the test. This test also qualifies as MQT 02 Maximum Power Determination.

We used a pulse-type solar simulator (Halm moduleTest 3; Fig. 4.3.1), classified as class AAA per IEC 60904-9:2007. The irradiance of the Xenon arc lamp flash at the module plane was measured with a co-planar reference cell (Fraunhofer WPVS type, manufactured by Czibula & Grundmann GmbH) that meets the requirements of IEC 60904-2:2015. The reference cell was calibrated at PTB of Germany. The solar simulator was in a room constantly maintained at $25 \pm 1^\circ\text{C}$, and prior to the tests we waited for the modules to thermally stabilize to the room temperature. During the test, the module backside temperature was measured at four points with calibrated RTDs with accuracy better than $\pm 0.2^\circ\text{C}$.

The reported I-V characteristics show the average of three consecutive measurements. Each measurement was carried out in conformity with IEC 60904-1:2006. One measurement involved a forward sweep (I_{sc} to V_{oc}) and a reverse sweep (V_{oc} to I_{sc}), whose I-V data were averaged to calculate the I_{sc} , V_{oc} , I_{mp} , and V_{mp} values. The irradiance was controlled to be within $1000 \pm 3 \text{ W/m}^2$ for the measurements. The minimal differences between the STC and the actual test conditions were further corrected per IEC 60891:2009.

Prior to measurements, testing was carried out to check for I-V curve hysteresis between the forward and reverse sweeps. It was found that the VBHN325SA 16 module type needed three sections for both the forward and reverse sweeps. The effective sweep time for the measurements on the VBHN325SA 16 module type was 75 ms forward and 75 ms reverse.

A spectral mismatch factor of 1.0 was used as no EQE data was available for this module type.



Fig. 4.3.1 Class AAA solar simulator from h.a.l.m. used at CFV

Table 4.3.1 shows the uncertainty and repeatability of CFV's STC performance data. The values take in to account all the major sources of error, including the reference cell calibration, spectrum of the flasher, non-uniformity of the irradiance in the test plane, etc. CFV maintains a rigorous daily, weekly, and quarterly quality control program to guarantee top-tier flash measurement accuracy. The quarterly control modules are also measured annually at Fraunhofer ISE CalLab of Germany.

4.4 Performance Matrix

Multi-irradiance and multi-temperature Performance Matrix test was conducted in conformity with IEC 61853-1:2011 § 8.1. CFV is ISO 17025-accredited to carry out this test.

The test points cover irradiances from 100 to 1100 W/m², and temperatures from 15 to 75°C. In addition to the test points defined in IEC 61853-1:2011 § 8.1, measurements were obtained at five additional points, as shown in Table 4.4.1. The irradiance was varied by adjusting the voltage applied to the Xenon arc lamp. The spectral match remains class A or

better for all irradiances. An integrated thermal chamber varied the module temperature with a laminar air flow, and the module temperature was monitored at 4 points with calibrated RTDs having uncertainties of $\pm 0.13^\circ\text{C}$. For each measurement, the max-min temperature spread was less than 1.5°C .

The monitor cell was mounted at a location outside the thermal chamber and was not coplanar with the test module. The monitor cell sensitivity was adjusted to reproduce the P_{mp} measured at STC on the test module. Other than the irradiance and temperature controls, the measurement procedure was identical to the Performance at STC test.

Table 4.4.1: Test points for the performance matrix. 5 additional test points are indicated.

| Irradiance (W/m ²) | Temperature | | | |
|-----------------------------------|-------------|------|------|------|
| | 15°C | 25°C | 50°C | 75°C |
| 1100 | | ⊙ | ⊙ | ⊙ |
| 1000 | ⊙ | ⊙ | ⊙ | ⊙ |
| 800 | ⊙ | ⊙ | ⊙ | ⊙ |
| 600 | ⊙ | ⊙ | ⊙ | ⊙ |
| 400 | ⊙ | ⊙ | ⊙ | ⊗ |
| 200 | ⊙ | ⊙ | ⊗ | ⊗ |
| 100 | ⊙ | ⊙ | ⊗ | ⊗ |

⊙ Measured and required by the IEC 61853-1 standard

⊗ Additional test points; Measured but not required by the IEC 61853-1 standard

4.5 MQT 04 Temperature Coefficients

Temperature Coefficients test was conducted in conformity with IEC 61215-2:2016 MQT 04 and IEC 60891:2009 § 4. CFV Solar is ISO 17025-accredited to carry out the test.

The test was carried out along with the Performance Matrix test. In addition to the 15, 25, 50, and 75°C temperatures required for the matrix, the modules were flashed with 1000 W/m² irradiance at additional intermediate temperatures. The temperature coefficients for I_{sc}, V_{oc}, I_{mp}, V_{mp}, and P_{mp} were determined by linear regression over the 15-75°C temperature range.

4.6 Performance Data Scaling

When creating PAN files for PV_{sys}, one requirement is that the P_{mp} at STC needs to match the nameplate power. This requirement translates into the technical issues of (1) how to scale the P_{mp} values at the various temperature and irradiance points and (2) how to scale the STC I_{sc}, V_{oc}, I_{mp}, and V_{mp} values, if the measured values at STC do not match the nameplate values.

In this project, we scaled the performance matrix data for use with PANOpt®, by the following approach:

Measured STC Approach

| | |
|---------------------------|---|
| Pmp | A constant gain factor was applied to the Pmp values in the matrix, to obtain the nameplate rating at STC. The gain factor used was: $[Pmp\ Gain] = [NP\ Pmp] / [Measured\ STC\ Pmp]$ |
| Isc, Voc, Imp, Vmp | A constant gain factor equal to the square root of [Pmp Gain] was applied to the I _{sc} , V _{oc} , I _{mp} , and V _{mp} values. $[Isc\ Gain] = [Voc\ Gain] = [Imp\ Gain] = [Vmp\ Gain] = [Pmp\ Gain]^{1/2}$ |

4.7 PAN file Generation and Optimization

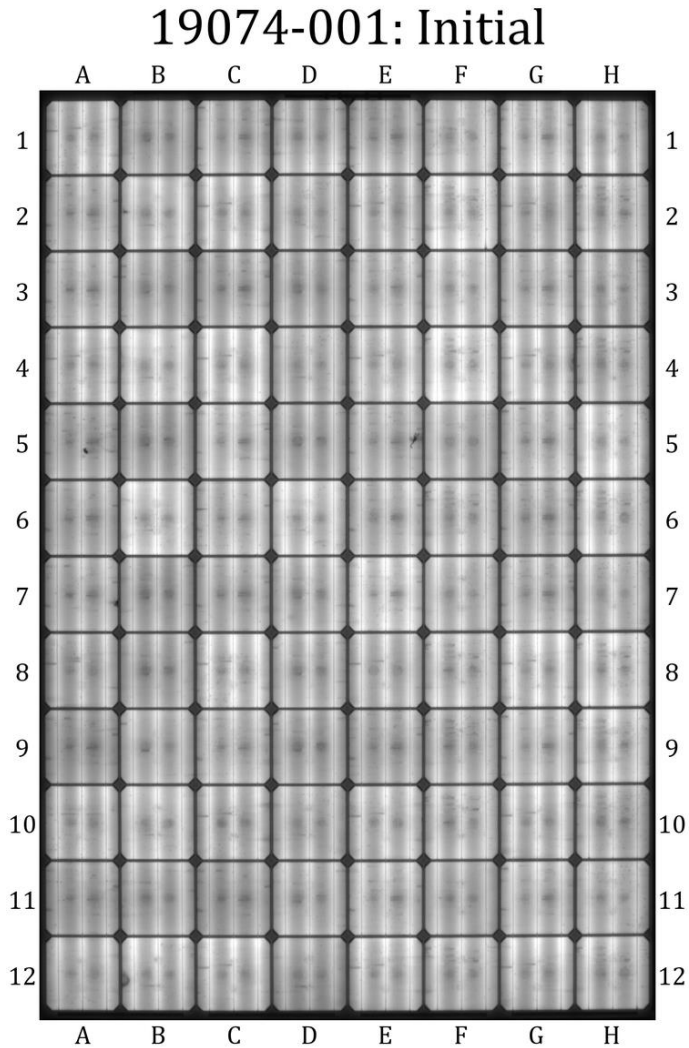
Optimized PAN files were prepared using PANOpt®, an in-house-developed software for deriving from the test data optimum solutions for the PV_{sys} 6 single-diode performance model. Starting with the measured values of I_{sc}, V_{oc}, I_{mp}, V_{mp}, μI_{sc}, and an R_s value calculated from the I-V curves with the Swanson method, the PANOpt® solver iterated over a given parameter space for R_s, R_{sh}, R_{shG0} (and di²/μτ_{eff} for thin-film technologies) until the PV_{sys} 6 model-predicted P_{mp} values over the Performance Matrix points matched the measured values (average of three samples) with minimum error.

The IAM profile of the test module was not experimentally determined. The default PV_{sys} IAM profile for normal glass was adopted.

5 Results

5.1 Electroluminescence Imaging

The module was imaged in the dark while a constant DC bias current of 6.03 A (I_{sc}) was applied to the module.



5.2 Preconditioning

The module received 41.33 kWh/m² of outdoor preconditioning prior to indoor performance testing. The preconditioning was performed with the module in open circuit.

5.3 MQT 06.1 Performance at STC

The following values were measured after preconditioning and during the Performance Matrix test.

| Module ID | Isc [A] | Voc [V] | Imp [V] | Vmp [V] | Pmp [W] | FF [%] |
|-----------|---------|---------|---------|---------|---------|--------|
| 19074-001 | 5.903 | 70.21 | 5.506 | 58.54 | 322.30 | 77.76 |

Table 5.3.1 Uncertainty and repeatability of flash measurements on Si modules

| | Isc | Voc | Imp | Vmp | Pmp |
|----------------------|----------|----------|----------|----------|----------|
| Uncertainty | ± 1.8 % | ± 0.7 % | ± 2.2 % | ± 1.3 % | ± 2.2 % |
| Repeatability | ± 0.20 % | ± 0.20 % | ± 0.30 % | ± 0.40 % | ± 0.45 % |

5.4 MQT 04 Temperature Coefficients

Relative Units

| Module ID | α Isc [%/°C] | β Voc [%/°C] | α Imp [%/°C] | β Vmp [%/°C] | δ Pmp [%/°C] |
|-----------|---------------------|--------------------|---------------------|--------------------|---------------------|
| 19074-001 | +0.0264 | -0.2421 | -0.0037 | -0.2931 | -0.2962 |

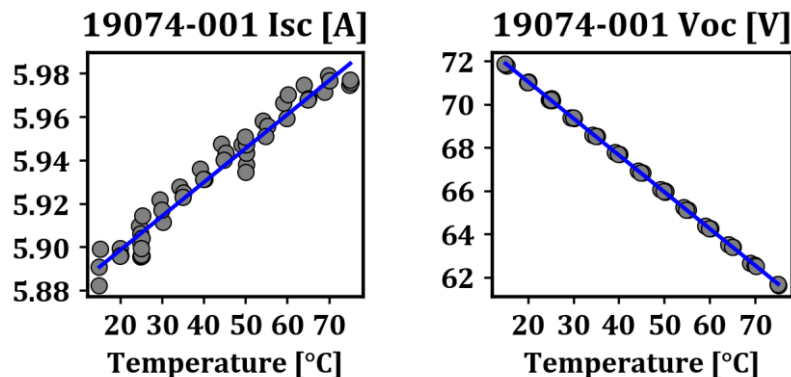
Absolute Units

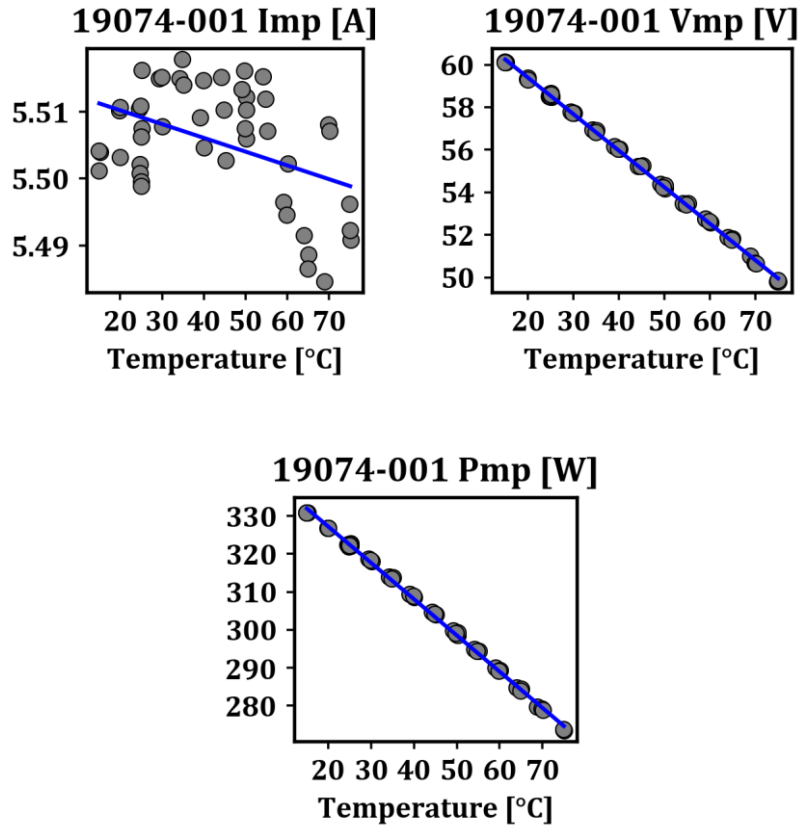
| Module ID | α Isc [A/°C] | β Voc [V/°C] | α Imp [A/°C] | β Vmp [V/°C] | δ Pmp [W/°C] |
|-----------|---------------------|--------------------|---------------------|--------------------|---------------------|
| 19074-001 | +0.00156 | -0.1699 | -0.00021 | -0.1715 | -0.9551 |

Table 5.4.1 Estimated uncertainty of temperature coefficients (relative)

| | α Isc | β Voc | α Imp | β Vmp | γ Pmp |
|----------------------------|--------------|-------------|--------------|-------------|--------------|
| Uncertainty (k = 2) | ± 10 % | ± 5 % | N/A | N/A | ± 5 % |

Plots





Measured Data

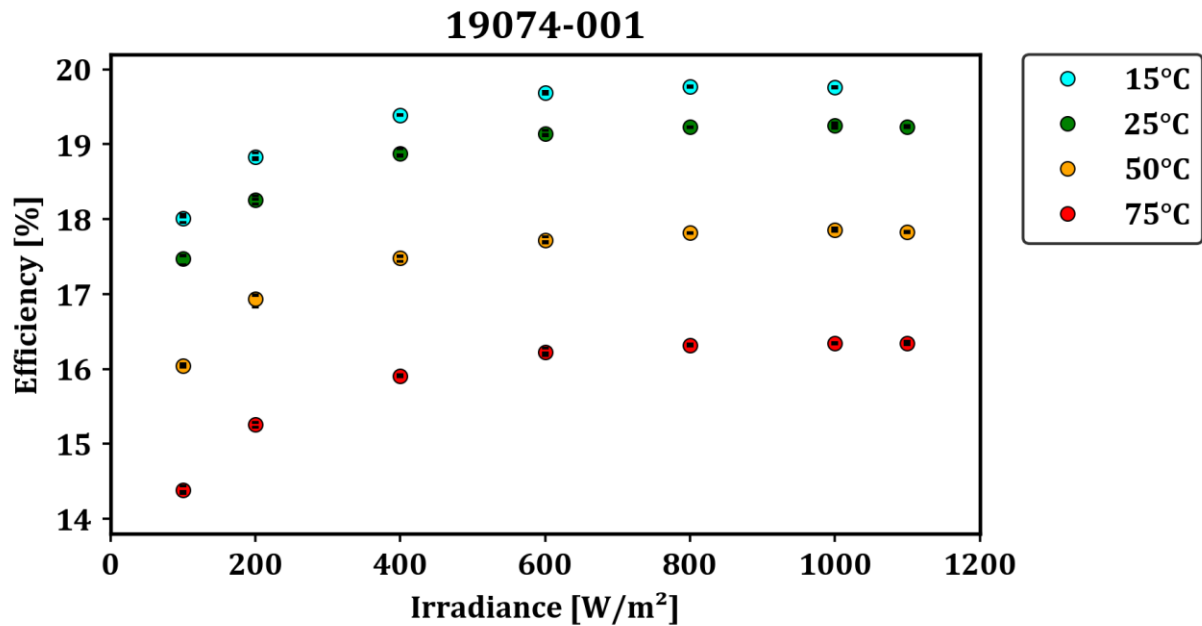
The following table shows the I-V values measured on the tested sample.

| Module ID | T (°C) | G (W/m ²) | Isc (A) | Voc (V) | Imp (A) | Vmp (V) | Pmp (W) |
|-----------|--------|-----------------------|---------|---------|---------|---------|---------|
| 19074-001 | 14.97 | 1000 | 5.891 | 71.86 | 5.503 | 60.13 | 330.88 |
| 19074-001 | 19.92 | 1000 | 5.897 | 71.04 | 5.508 | 59.34 | 326.83 |
| 19074-001 | 24.91 | 1000 | 5.903 | 70.23 | 5.506 | 58.55 | 322.36 |
| 19074-001 | 29.79 | 1000 | 5.917 | 69.39 | 5.513 | 57.75 | 318.35 |
| 19074-001 | 34.72 | 1000 | 5.925 | 68.56 | 5.516 | 56.89 | 313.81 |
| 19074-001 | 39.66 | 1000 | 5.933 | 67.74 | 5.510 | 56.08 | 309.00 |
| 19074-001 | 44.71 | 1000 | 5.944 | 66.88 | 5.509 | 55.24 | 304.32 |
| 19074-001 | 49.87 | 1000 | 5.944 | 66.01 | 5.511 | 54.26 | 299.04 |
| 19074-001 | 54.69 | 1000 | 5.955 | 65.18 | 5.511 | 53.45 | 294.59 |
| 19074-001 | 59.63 | 1000 | 5.965 | 64.32 | 5.498 | 52.66 | 289.50 |
| 19074-001 | 64.62 | 1000 | 5.970 | 63.46 | 5.489 | 51.82 | 284.42 |
| 19074-001 | 69.58 | 1000 | 5.976 | 62.60 | 5.500 | 50.78 | 279.29 |
| 19074-001 | 74.97 | 1000 | 5.976 | 61.68 | 5.493 | 49.82 | 273.67 |

5.5 Performance Matrix

Efficiency Curves

In the following plot, circles indicate the average of three measurements at each irradiance and temperature test condition. Bars inside the circles indicate the values from each of the three measurements.



Measured Data

The following table shows the Performance Matrix data measured on the tested sample.

| Module ID | T (°C) | G (W/m2) | Isc (A) | Voc (V) | Imp (A) | Vmp (V) | Pmp (W) |
|-----------|--------|----------|---------|---------|---------|---------|---------|
| 19074-001 | 15 | 100 | 0.595 | 65.78 | 0.543 | 55.56 | 30.16 |
| 19074-001 | 15 | 200 | 1.183 | 67.79 | 1.093 | 57.70 | 63.06 |
| 19074-001 | 15 | 400 | 2.354 | 69.65 | 2.185 | 59.42 | 129.85 |
| 19074-001 | 15 | 600 | 3.532 | 70.65 | 3.292 | 60.06 | 197.74 |
| 19074-001 | 15 | 800 | 4.706 | 71.35 | 4.398 | 60.21 | 264.83 |
| 19074-001 | 15 | 1000 | 5.891 | 71.85 | 5.503 | 60.12 | 330.86 |
| 19074-001 | 25 | 100 | 0.599 | 63.95 | 0.547 | 53.47 | 29.25 |
| 19074-001 | 25 | 200 | 1.183 | 66.01 | 1.090 | 56.07 | 61.14 |
| 19074-001 | 25 | 400 | 2.365 | 67.92 | 2.190 | 57.75 | 126.45 |
| 19074-001 | 25 | 600 | 3.542 | 68.96 | 3.298 | 58.31 | 192.28 |
| 19074-001 | 25 | 800 | 4.718 | 69.68 | 4.400 | 58.54 | 257.56 |
| 19074-001 | 25 | 1000 | 5.903 | 70.21 | 5.506 | 58.54 | 322.30 |
| 19074-001 | 25 | 1100 | 6.488 | 70.44 | 6.055 | 58.49 | 354.17 |
| 19074-001 | 50 | 100 | 0.602 | 59.36 | 0.541 | 49.64 | 26.85 |

| Module ID | T (°C) | G (W/m ²) | Isc (A) | Voc (V) | Imp (A) | Vmp (V) | Pmp (W) |
|-----------|--------|-----------------------|---------|---------|---------|---------|---------|
| 19074-001 | 50 | 200 | 1.199 | 61.52 | 1.096 | 51.75 | 56.70 |
| 19074-001 | 50 | 400 | 2.379 | 63.56 | 2.214 | 52.88 | 117.06 |
| 19074-001 | 50 | 600 | 3.567 | 64.66 | 3.302 | 53.89 | 177.96 |
| 19074-001 | 50 | 800 | 4.754 | 65.43 | 4.399 | 54.25 | 238.63 |
| 19074-001 | 50 | 1000 | 5.944 | 65.99 | 5.511 | 54.25 | 298.95 |
| 19074-001 | 50 | 1100 | 6.528 | 66.24 | 6.061 | 54.18 | 328.41 |
| 19074-001 | 75 | 100 | 0.606 | 54.60 | 0.543 | 44.32 | 24.07 |
| 19074-001 | 75 | 200 | 1.207 | 56.92 | 1.086 | 47.06 | 51.10 |
| 19074-001 | 75 | 400 | 2.399 | 59.07 | 2.188 | 48.70 | 106.55 |
| 19074-001 | 75 | 600 | 3.593 | 60.25 | 3.298 | 49.42 | 162.97 |
| 19074-001 | 75 | 800 | 4.784 | 61.05 | 4.386 | 49.84 | 218.58 |
| 19074-001 | 75 | 1000 | 5.976 | 61.67 | 5.493 | 49.82 | 273.65 |
| 19074-001 | 75 | 1100 | 6.578 | 61.92 | 6.031 | 49.91 | 301.01 |

5.6 Performance Matrix Data Scaling

The gain factors were calculated as explained in the procedures section.

Measured STC values of the single test module

| Measured Power Class | Measured STC Isc (A) | Measured STC Voc (V) | Measured STC Imp (A) | Measured STC Vmp (V) | Measured STC Pmp (W) |
|----------------------|----------------------|----------------------|----------------------|----------------------|----------------------|
| 325 | 5.903 | 70.21 | 5.506 | 58.54 | 322.30 |

Applied gain factors for PAN file STC values by power class

| PAN File Power Class | Isc Gain | Voc Gain | Imp Gain | Vmp Gain | Pmp Gain |
|----------------------|----------|----------|----------|----------|----------|
| 325 | 1.0042 | 1.0042 | 1.0042 | 1.0042 | 1.0084 |

PAN file STC values by power class

| PAN File Power Class | PAN File STC Isc (A) | PAN File STC Voc (V) | PAN File STC Imp (A) | PAN File STC Vmp (V) |
|----------------------|----------------------|----------------------|----------------------|----------------------|
| 325 | 5.927 | 70.51 | 5.529 | 58.78 |

5.7 PAN file Generation and Optimization

PAN File Parameters for 325 W Class

| Tab | Parameter | 325 W |
|------------------------------------|---------------------------------------|--|
| Basic data | Model | VBHN325SA 16 |
| | Manufacturer | Panasonic |
| | File name | Panasonic_VBHN325SA 16_Dec2019_CFV.PAN |
| | Data source | CFV Solar Test Lab - Tested Class |
| | Nom. Power (Wp) | 325 |
| | Tol. - (%) | 0 |
| | Tol. + (%) | 10 |
| | Technology | Si-mono |
| | GRef (W/m2) | 1000 |
| | TRef (°C) | 25 |
| | Isc (A) | 5.927 |
| | Voc (V) | 70.51 |
| | Imp (A) | 5.529 |
| | Vmpp (V) | 58.78 |
| mulsc (%/°C) | 0.026 | |
| Sizes and Technology | Length (mm) | 1590 |
| | Width (mm) | 1053 |
| | Thickness (mm) | 35 |
| | Cells in series | 96 |
| | Maximum voltage IEC (V) | 600 |
| | Maximum voltage UL (V) | 600 |
| | Nb. of sub-modules | 4 |
| | Sub-module partition | Full Cells |
| Model parameters / Rshunt - Rserie | Rsh (Ohm) | 1144 |
| | Rs (Ohm) | 0.600 |
| Model parameters / RShunt expon. | Rshunt at Ginc = 0 (Ohm) | 3850 |
| | Exponential parameter | 5.5 |
| Model parameters / Temper. coeff | Apply Temperature Correction on Gamma | Checked |
| | Pmpp temper. Coeff ¹ | -0.297 |
| Additional data / | Special IAM defined for this module | Unchecked |

¹ The Pmp temperature coefficient in PVsyst is different from the definition in IEC 60891:2009. In PVsyst, the Pmp temperature coefficient is calculated from the Pmp values at 25°C and 45°C. Per IEC 60891:2009, the Pmp temperature coefficient is to be calculated by a linear fit through Pmp values measured over a temperature range greater than or equal to 30°C. There is in fact some nonlinearity in the Pmp dependence on temperature, which is why the Pmp temperature coefficient value for the PAN file is different from the value reported in Section 04.

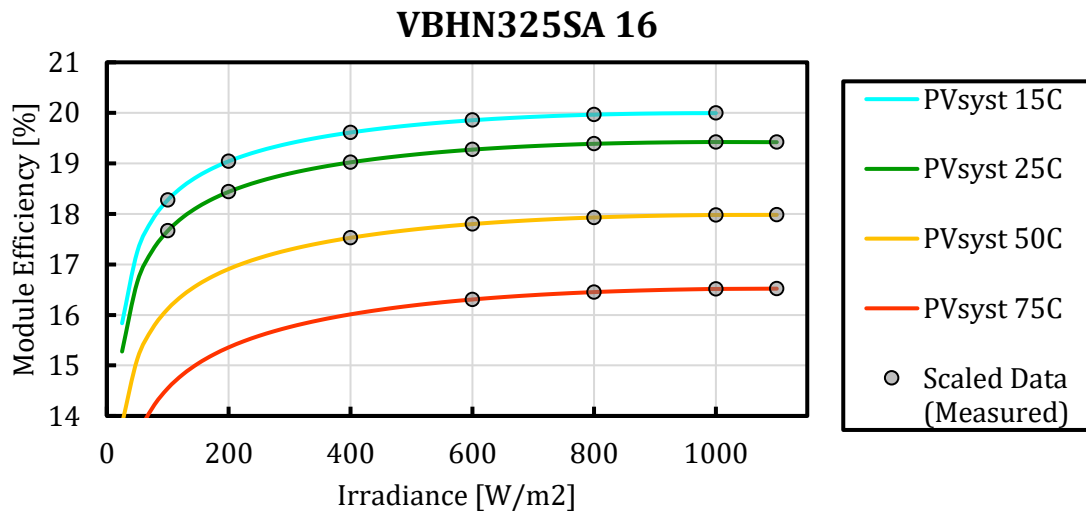
| Tab | Parameter | | 325 W |
|----------------|---------------|-----|--------------|
| Customized IAM | Front Surface | | Normal Glass |
| | Point 1 | 0° | 1.000 |
| | Point 2 | 30° | 0.998 |
| | Point 3 | 50° | 0.981 |
| | Point 4 | 60° | 0.948 |
| | Point 5 | 70° | 0.862 |
| | Point 6 | 75° | 0.776 |
| | Point 7 | 80° | 0.636 |
| | Point 8 | 85° | 0.403 |
| | Point 9 | 90° | 0.000 |

PAN File Model Accuracy

PVsyst 6 model output was compared with the scaled data used as the PANOpt® input.

| Power Class | RMS Error of Pmp (Error = PVsyst 6 model Pmp - Measured Pmp) [W] | | | | |
|-------------|--|------|------|------|------|
| | 15-75°C | 15°C | 25°C | 50°C | 75°C |
| 280 W | 0.05 | 0.05 | 0.05 | 0.04 | 0.04 |

| Module Type | RMS Error of Eff. (Error = PVsyst 6 model Eff. - Measured Eff.) [%p] | | | | |
|-------------|--|-------|-------|-------|-------|
| | 15-75°C | 15°C | 25°C | 50°C | 75°C |
| 280 W | 0.004 | 0.004 | 0.004 | 0.003 | 0.002 |



--END OF REPORT--