

Exceptional service in the national interest



Determining Coefficients for the Sandia Array Performance Model

2nd PV System Modeling Workshop

May 1, 2013

Clifford Hansen and Daniel Riley

Sandia National Laboratories, New Mexico (USA)



Sandia National Laboratories is a multi-program laboratory managed and operated by Sandia Corporation, a wholly owned subsidiary of Lockheed Martin Corporation, for the U.S. Department of Energy's National Nuclear Security Administration under contract DE-AC04-94AL85000.

Outline and Summary

- Sandia Array Performance Model
 - Predicts on-sun module performance with good accuracy
- Calibration using outdoor testing
 - Proven techniques, but,
 - Testing can take weeks
 - Documentation is lacking
- Calibration using indoor testing:
 - Proof of concept presented at 38th PVSC
 - Independently, D. King arrived at a similar approach
 - Cut turnaround time for module testing from weeks to hours
 - Predictions of on-sun module performance show similar accuracy
 - However, not all coefficients can be estimated using indoor testing

The Sandia Array Performance Model

- Describes module output at SC, OC and MP points
- As a function of beam and diffuse irradiance (E_b and E_{diff}), cell temperature (T_C), air mass (AM_a) and angle of incidence (AOI)
- 14 empirical coefficients, 2 empirical functions (f_1 and f_2)
- With exception of f_2 , coefficients determined for individual modules

$$V_{OC} = V_{OC0} + N_s n \delta(T_C) \ln(E_e) + \beta_{OC} (T_C - T_0)$$

$$V_{MP} = V_{MP0} + C_2 N_s n \delta(T_C) \ln(E_e) + C_3 N_s (n \delta(T_C) \ln(E_e))^2 + \beta_{MP} (T_C - T_0)$$

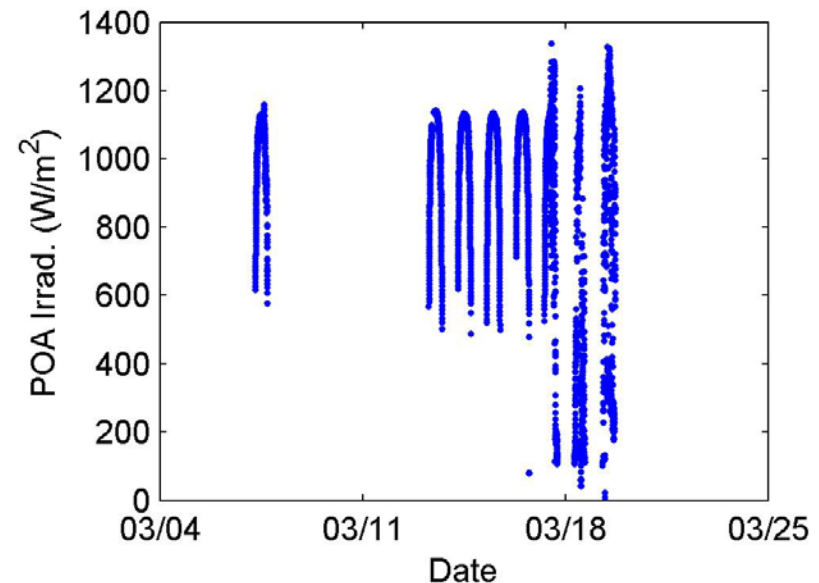
$$I_{SC} = I_{SC0} f_1(AM_a) E_e (1 + \alpha_{SC} (T_C - T_0))$$

$$I_{MP} = I_{MP0} (C_0 E_e + C_1 E_e^2) (1 + \alpha_{MP} (T_C - T_0))$$

$$E_e = E_b f_2(AOI) + E_{diff} f_d$$

SAPM calibrated by Outdoor Testing

- I-V curves measured on 2-axis tracker during three sequential tests:
 - Thermal performance
 - Electrical performance
 - Incident angle
- Can take several weeks to obtain I-V curves during all important conditions



Example of parameter estimation

- Estimate temperature coefficient for V_{OC} from thermal performance test

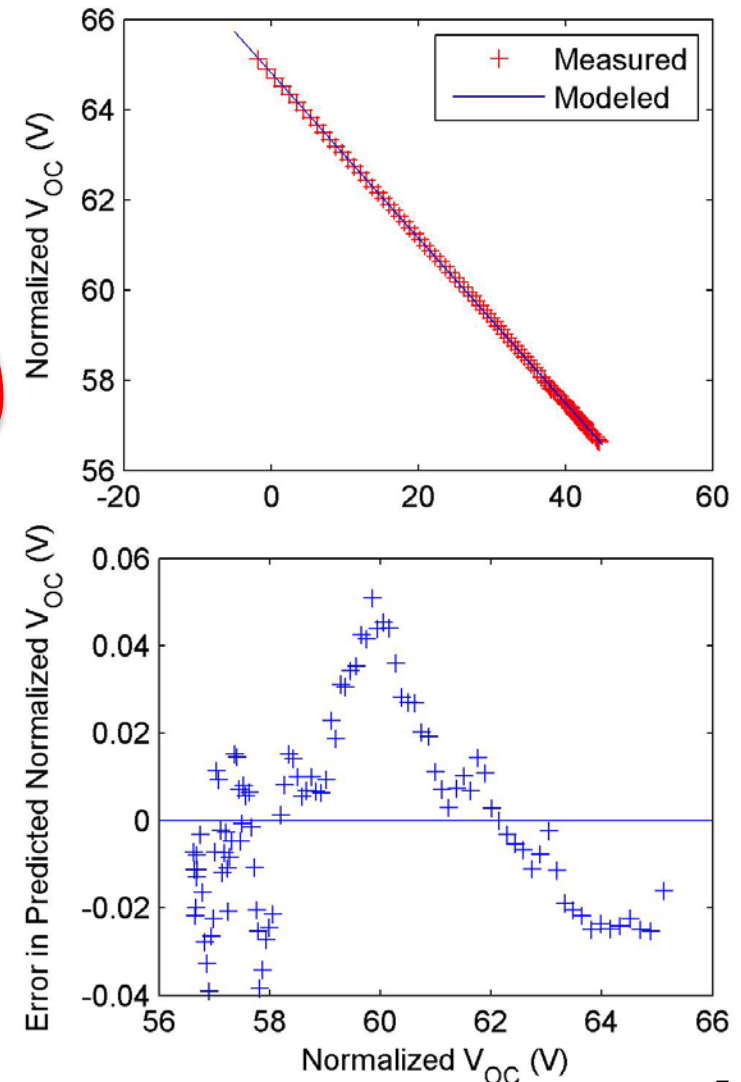
- Maintain $AOI = 0$
 - Clear-sky conditions
- } $E_e \approx 1$

$$V_{OC} = V_{OC0} + N_s n \delta (T_C) \ln(E_e) + \beta_{OC} (T_C - T_0)$$

↓ simplifies to

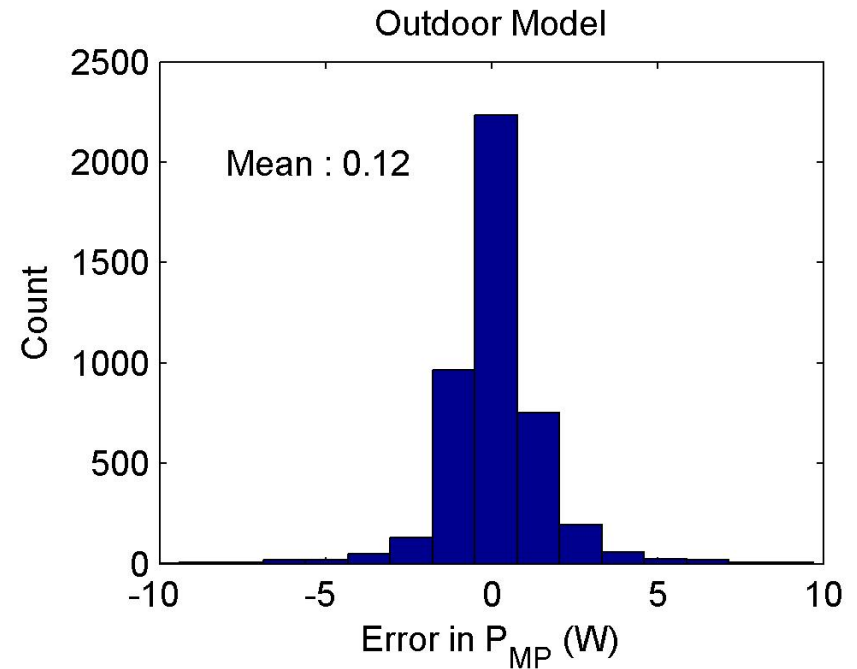
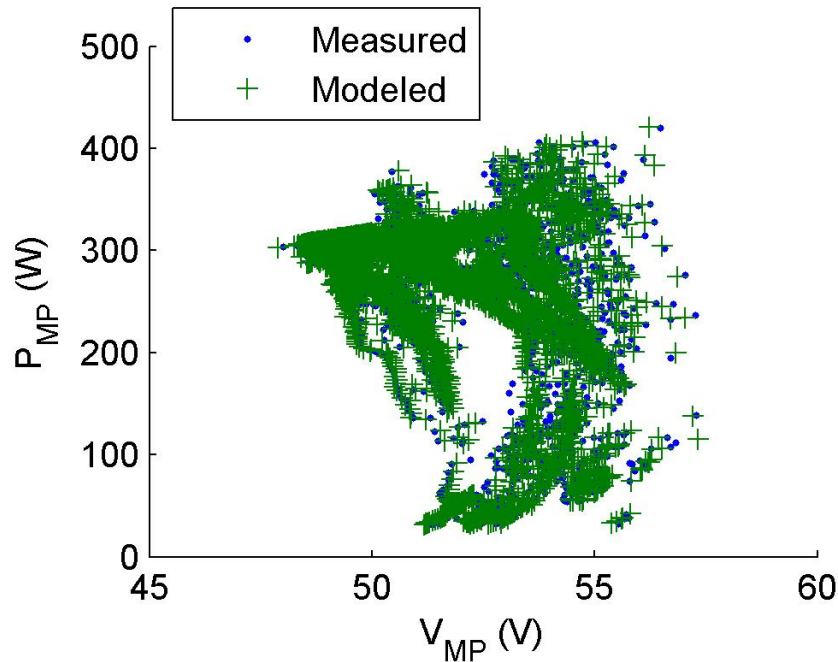
$$V_{OC} = V_{OC0} + \beta_{OC} (T_C - T_0)$$

- Cover module and cool to ambient
- Uncover and measure I-V curves while module heats to operating temperature
- Normalize measured V_{OC} to 1000 W/m^2
- β_{OC} estimated from (T_C, V_{OC}) by linear regression



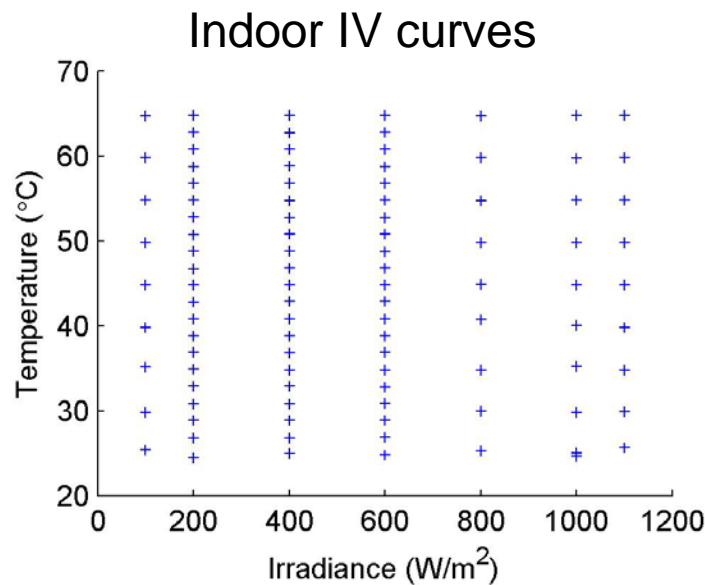
Performance of “outdoor” model

- One SunPower 305W cSi module
- Albuquerque, NM, in March 2012
- “In sample” model verification

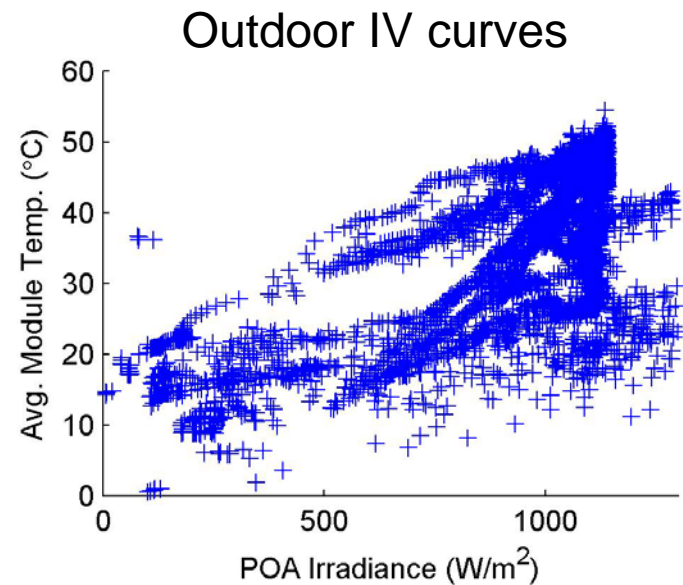


Indoor testing (reported at 38th PVSC)

- Conducted by CFV Solar Test Laboratory, Inc (Albuquerque, NM)
- HALM solar simulator integrated with a thermal chamber
 - Varies irradiance between 0.1 and 1.1 suns
 - Temperature between 25C and 75C via laminar air flow heater
- We measured I-V curves for irradiance and temperature combinations following IEC 61853-1

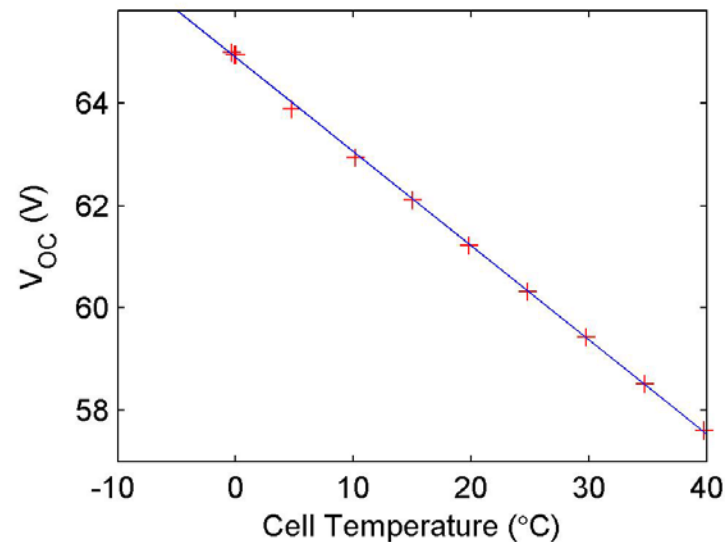
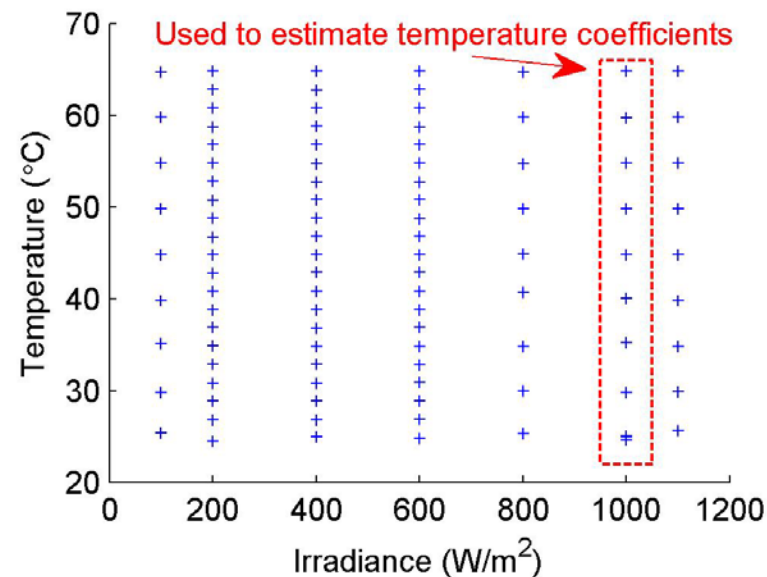


Much less data than for outdoor testing



Parameters from indoor testing

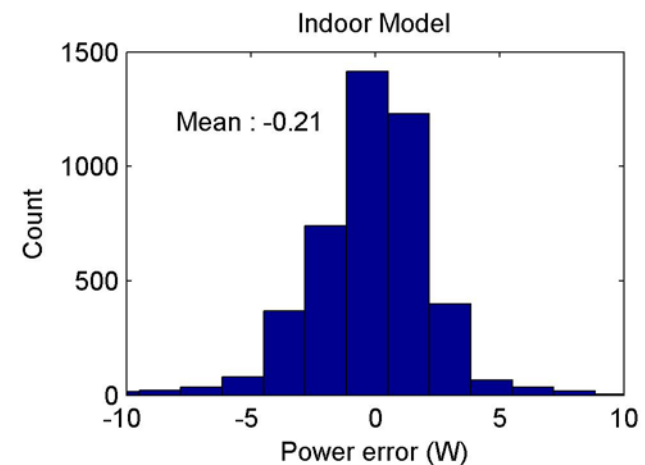
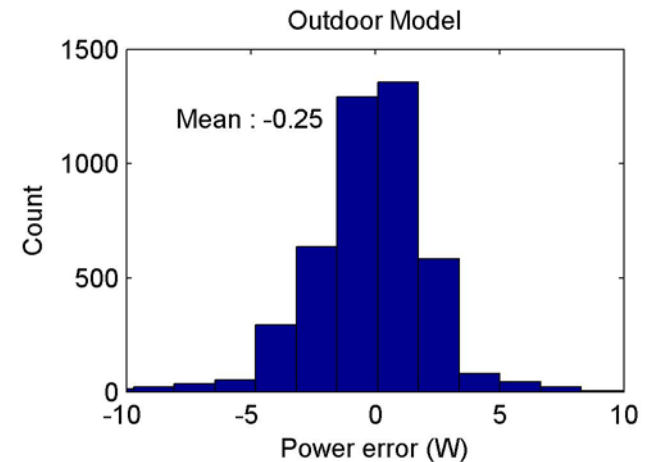
- IEC 61853 test matrix
- Two-stage process analogous to outdoor test methods
 - Estimate thermal coefficients, then
 - Use thermal coefficients in estimation of other parameters
- Other methods (e.g., full simultaneous) performed worse
- D. King independently arrived at similar approach



Performance of “indoor” model

- Parameter values obtained are similar for outdoor and indoor models
- Similar accuracy predicting outdoor performance

Parameter	Outdoor Model	Indoor Model
β_{OC} (V/°C)	-0.195	-0.197
V_{OC0} (V)	65.044	64.882
β_{MP} (V/°C)	-0.183	-0.184
V_{MP0} (V)	54.193	54.15
α_{MP} (1/°C)	-0.00017	-0.000169
I_{MP0} (A)	5.623	5.631
α_{SC} (1/°C)	0.000425	0.000378
I_{SC0} (A)	5.976	5.969
n (unitless)	1.12	1.074
$C_0; C_1$ (unitless)	1.0121; -0.0121	1.0069; -0.0069
$C_2; C_3$ (unitless)	0.3114; -5.0257	0.3379; -4.7201
N_s (cells in series)	96	96



Conclusions, and Future Work

- For outdoor testing:
 - Testing and parameter estimation methods have proven reliable but should be better documented
- For indoor testing:
 - Most (but not all) parameters for SAPM can be determined from indoor testing if irradiance and module temperature can be varied separately
 - Currently, we cannot determine f_1 or f_2 from indoor measurements
 - Using surrogate f_2 function from analog modules has been acceptable
 - Methods need better documentation

Available references

Sandia Array Performance Model

- King et al. 2004, *Photovoltaic Array Performance Model*, Sandia Report 2004-3535

Generating coefficients for SAPM

- Hansen et al. 2011 PVSC Paper, *Parameter Uncertainty in the Sandia Array Performance Model for Flat-Plate Crystalline Silicon Modules*
- Hansen et al. 2012 PVSC Paper, *Calibration of the Sandia Array Performance Model Using Indoor Measurements*

Copies available at pv.sandia.gov, PV Publications page