

Field Performance of Bifacial PV Modules and Systems

28th Annual NREL Silicon Workshop

Winter Park, CO
August 13, 2018

Clifford Hansen¹, Joshua Stein¹, Dan Riley¹, Matthew Lave¹, Chris Deline², Fatima Toor³

¹*Sandia National Laboratories*

²*National Renewable Energy Laboratory*

³*University Of Iowa*



Sandia National Laboratories is a multimission laboratory managed and operated by National Technology and Engineering Solutions of Sandia, LLC., a wholly owned subsidiary of Honeywell International, Inc., for the U.S. Department of Energy's National Nuclear Security Administration under contract DE-NA0003525..



PVPerformance
MODELING COLLABORATIVE

*Exceptional service
in the national interest*



Sandia
National
Laboratories



SAND2018-8876 C

3-Yr Bifacial Research Project (2016-2018)

Collaborative project between Sandia, NREL and University of Iowa
(pvpmc.sandia.gov/pv-research/bifacial-pv-project/)

Task 1: Measure Outdoor Bifacial Performance

- Module scale
 - Adjustable rack (height, tilt, albedo, and backside shading effects)
 - Spatial variability in backside irradiance
 - Effects of backside obstructions
- String scale
 - Fixed tilt rack (tilt, mismatch effects)
 - Single axis tracker (ongoing)
 - Two-axis tracker
- System scale
 - String level monitoring on commercial systems (validation data)



Stein, J. S., D. Riley, M. Lave, C. Deline, F. Toor and C. Hansen (2017). Outdoor Field Performance of Bifacial PV Modules and Systems. 33rd European PV Solar Energy Conference and Exhibition. Amsterdam, Netherlands. SAND2017-10254

3-Yr Bifacial Research Project (FY16-18)

Task 2: Develop Performance Models

Irradiance modeling

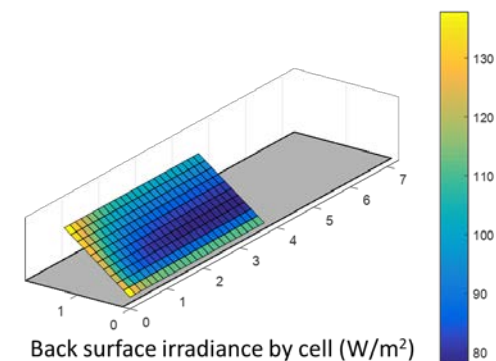
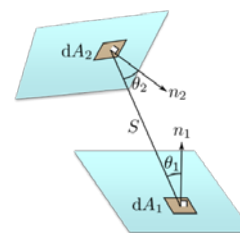
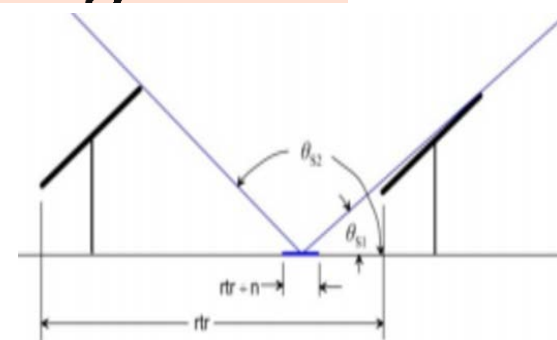
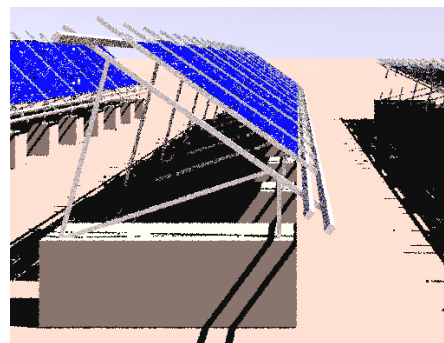
- Ray tracing simulations
github.com/cdeline/bifacial_radiance
- 2D view factor method for conventional arrays
github.com/cdeline/bifacialVF, SAM, PVsyst
- 3D view factor method for cell-by-cell irradiance
pvpmc.sandia.gov/pv-research/bifacial-pv-project/

Module performance models

- Work in progress: cell-by-cell mismatch is outstanding issue

Task 3: Support Rating Standards

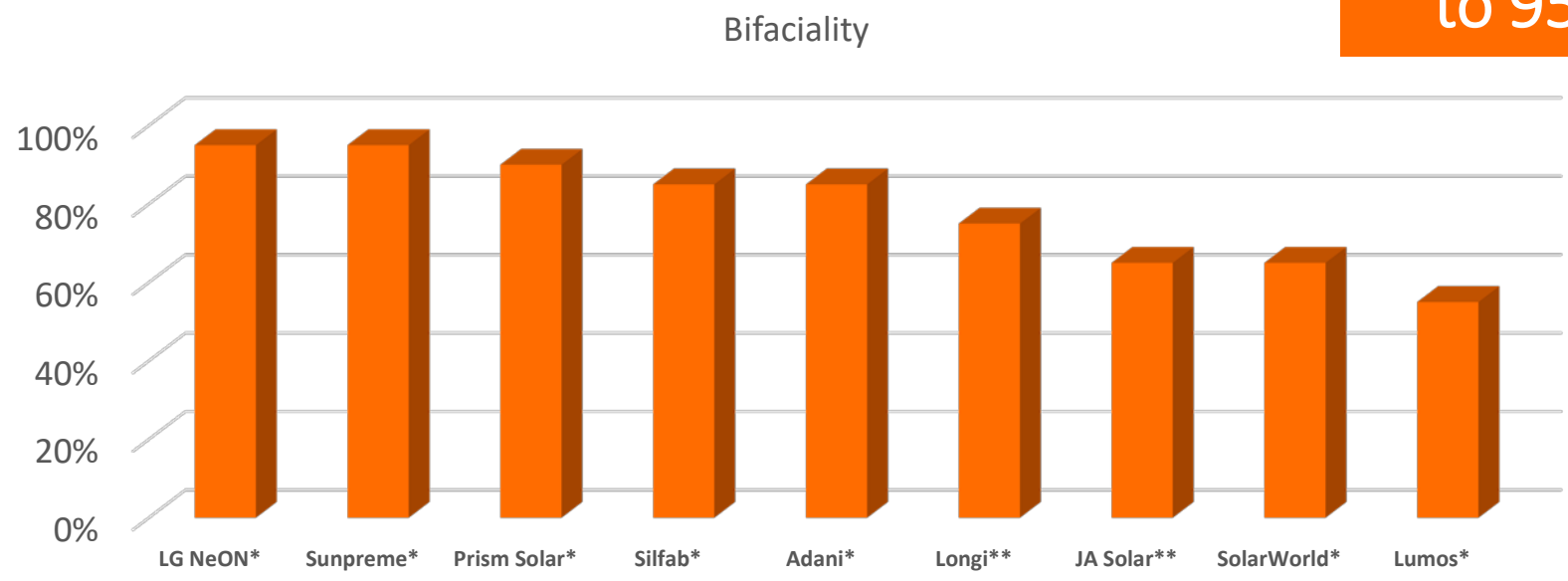
- Support new bifacial rating standard (IEC 60904-1-2 - Draft)



Bifaciality : a module property

$$\text{Bifaciality} = P_{MP} (\text{rear}) / P_{MP} (\text{front})$$

From 65%
to 95%



* Info from Bifacial PV Systems Solar Professional Magazine

** Info from manufacturer datasheet

Quantifying Bifacial System Performance

- We compare bifacial modules to similar monofacial modules in the same mounting and orientation (e.g., fixed tilt, south-facing) using *bifacial gain BG (energy or power)*
 - $E_{bifacial}/E_{monofacial} = 1 + BG$
- Normalize rated capacity to compare between systems, i.e.,
 - $BG = \frac{\sum P_{bifacial}(t) / P_{0bifacial}}{\sum P_{monofacial}(t) / P_{0monofacial}} - 1$
- BG varies with bifaciality, but also with rear surface irradiance:
 - Rear-surface irradiance (mostly ground reflected irradiance) is not proportional to front-side plane-of-array irradiance
 - Albedo can change with time of day and season
 - Shadows from nearby objects
 - Nearby obstructions (e.g., racking)
 - Power is not always proportional to total irradiance (front + back)
 - Mismatch effects from spatially variable rear-surface irradiance

Prism Solar Modules in NM, NV and VT

New Mexico



Measured Albedo

- Natural = 0.2 – 0.3
- White = 0.5 – 0.6

Nevada



Measured Albedo

- Natural = 0.2
- White = 0.3

Vermont – summer



Measured Albedo

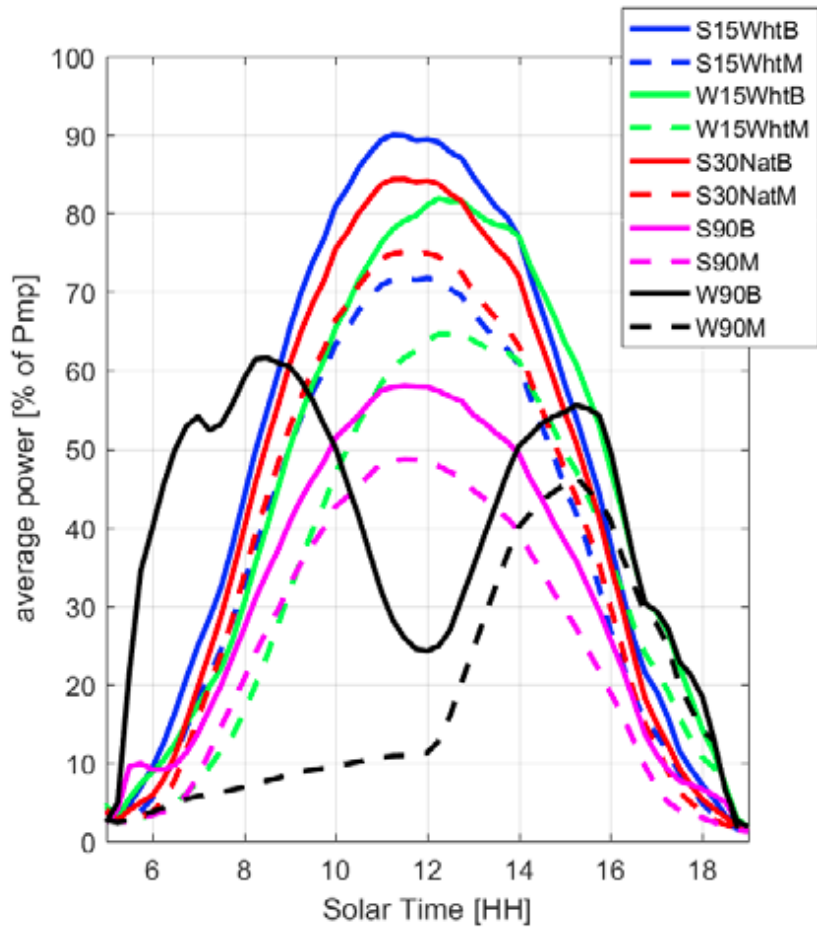
- Natural = 0.1 (Summer)
- White = 0.2 (Summer)
- Winter = 0.2 – 0.8

Vermont – winter

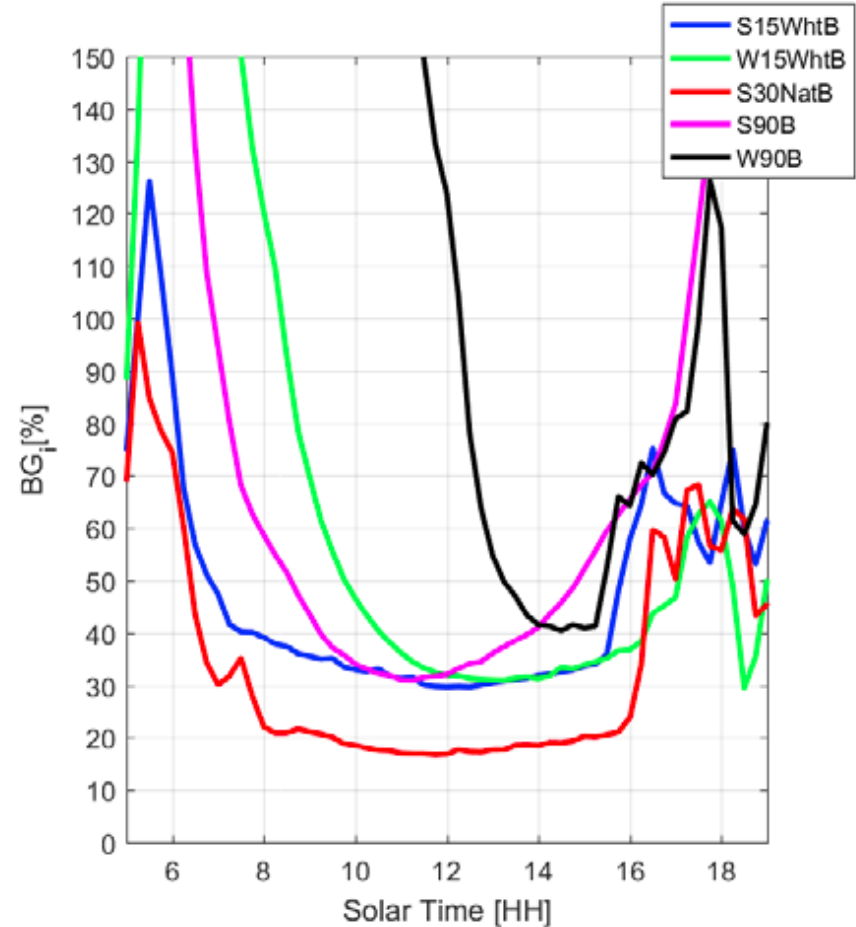


BG(power) varies significantly by time of day

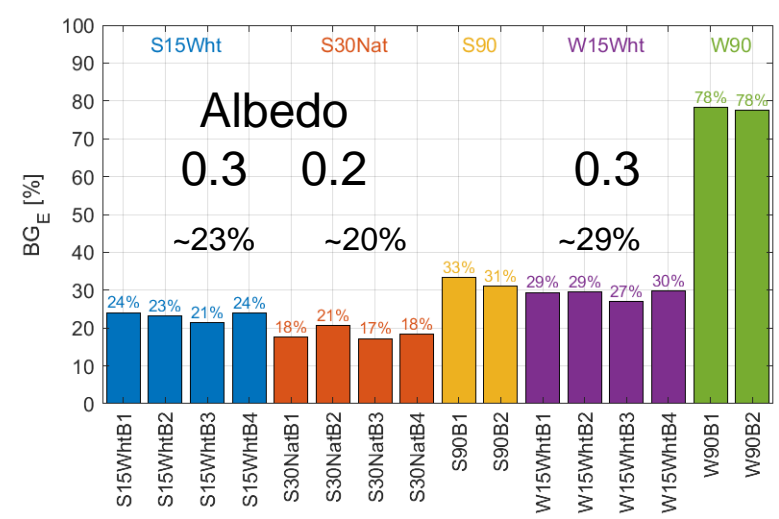
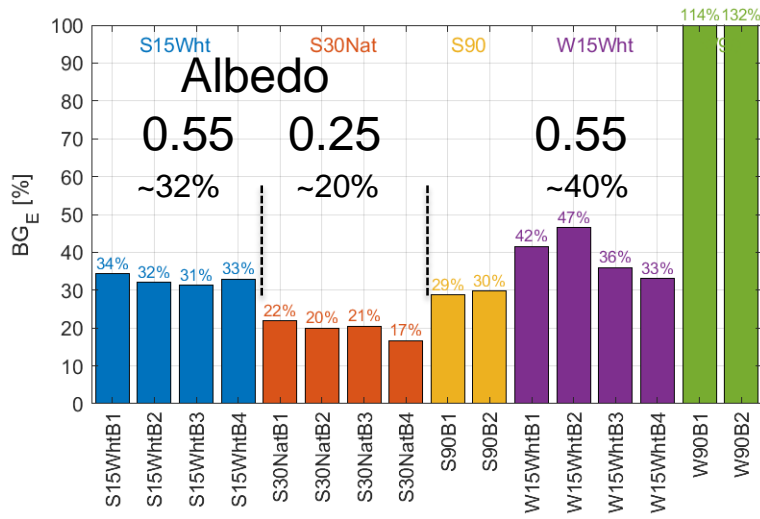
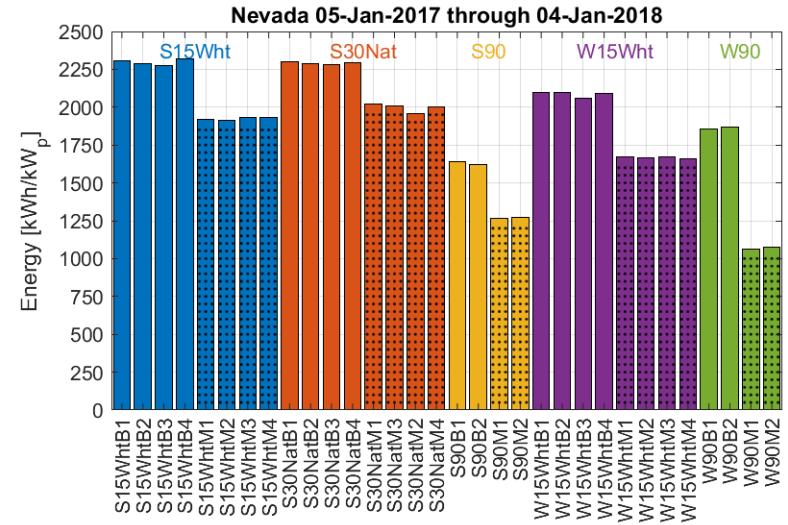
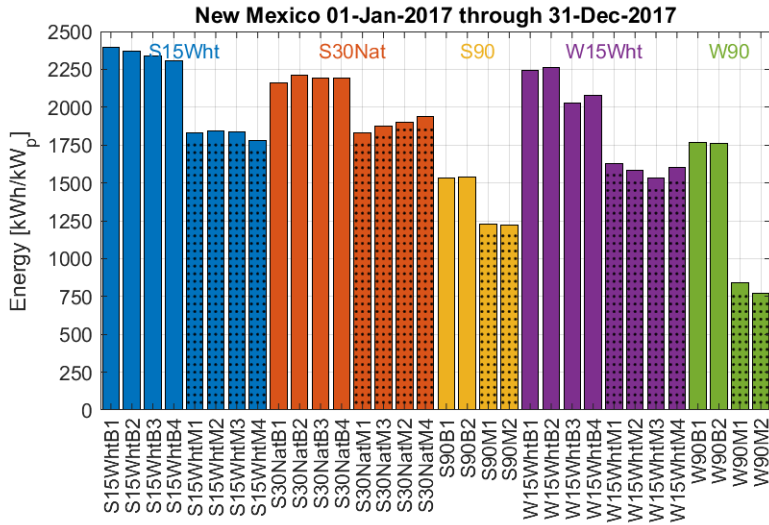
Average power for one year



Average BG(power) for one year



Annual energy (fixed tilt in NM, NV)

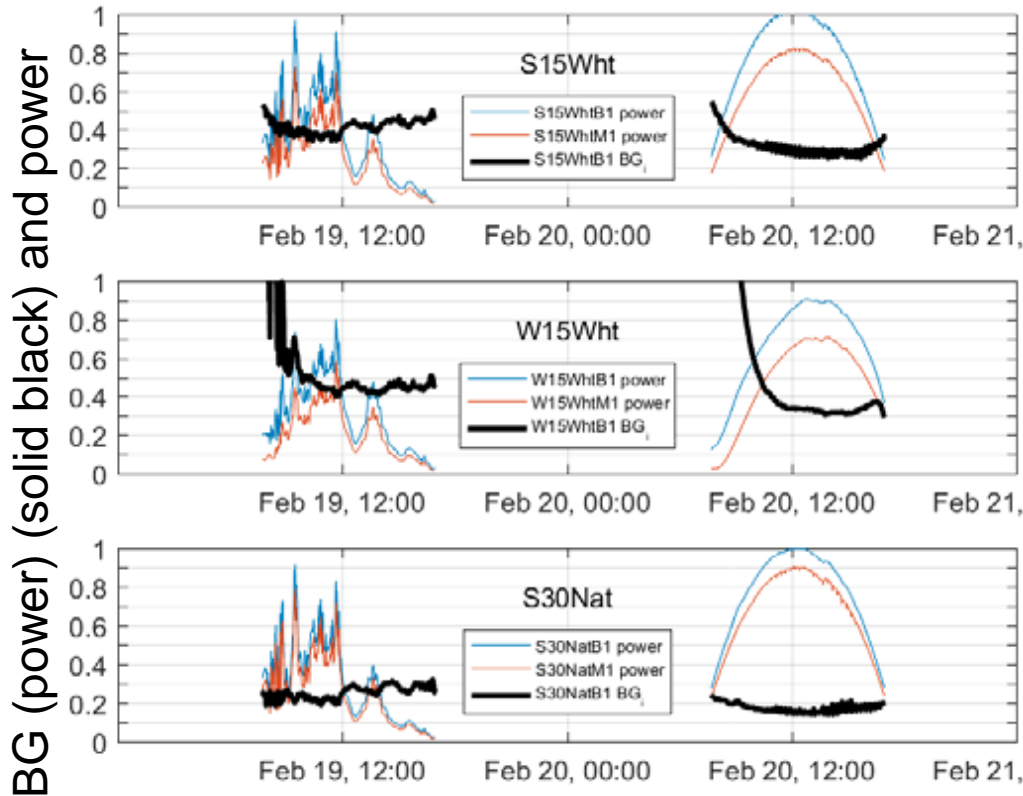


BG(power) vs. weather condition

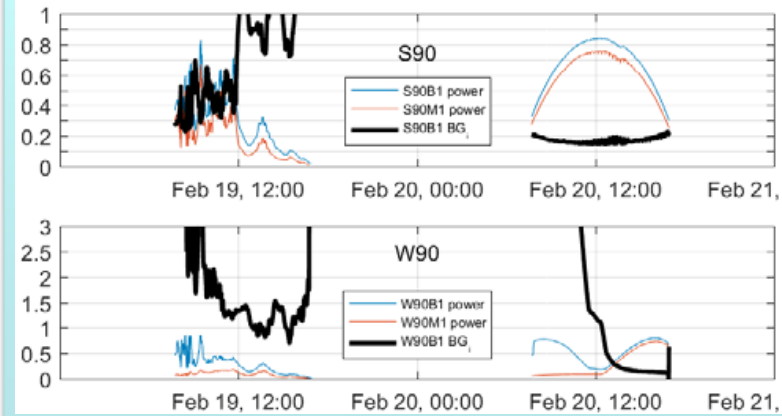
BG relatively stable for south and west tilted systems

Cloudy day

Clear day



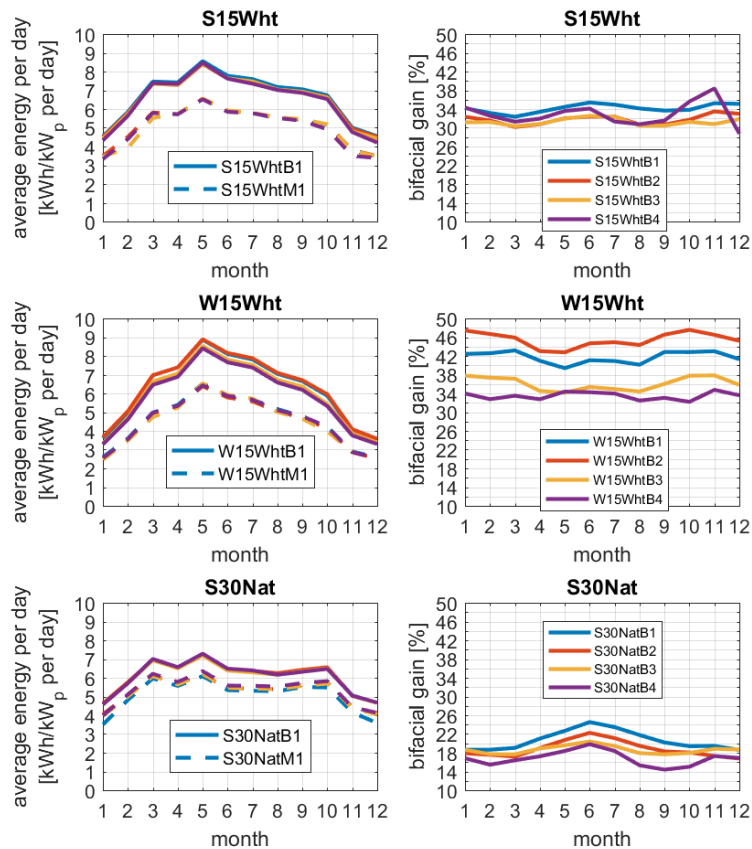
BG varies significantly with weather for vertical orientations



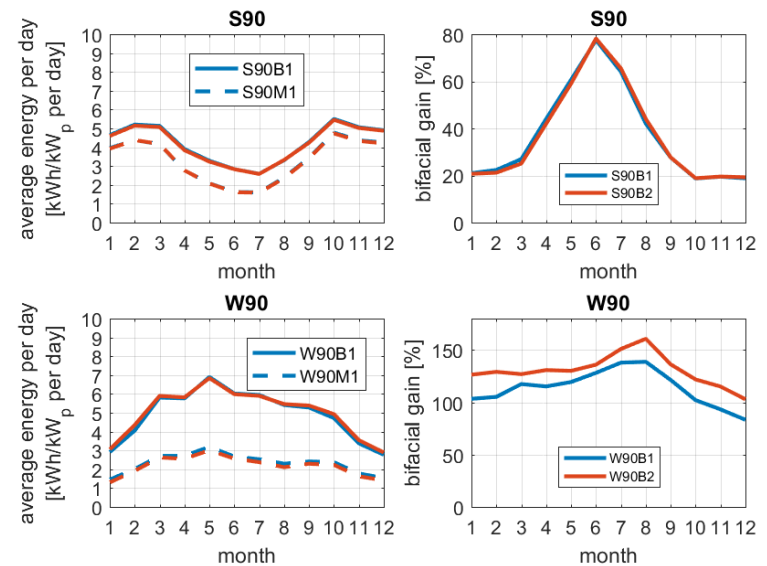
Monthly energy for Prism modules (NM) Sandia National Laboratories

BG(energy) relatively stable over seasons, except for vertical orientation

South and west tilted systems



Vertical oriented systems



Small-system Performance

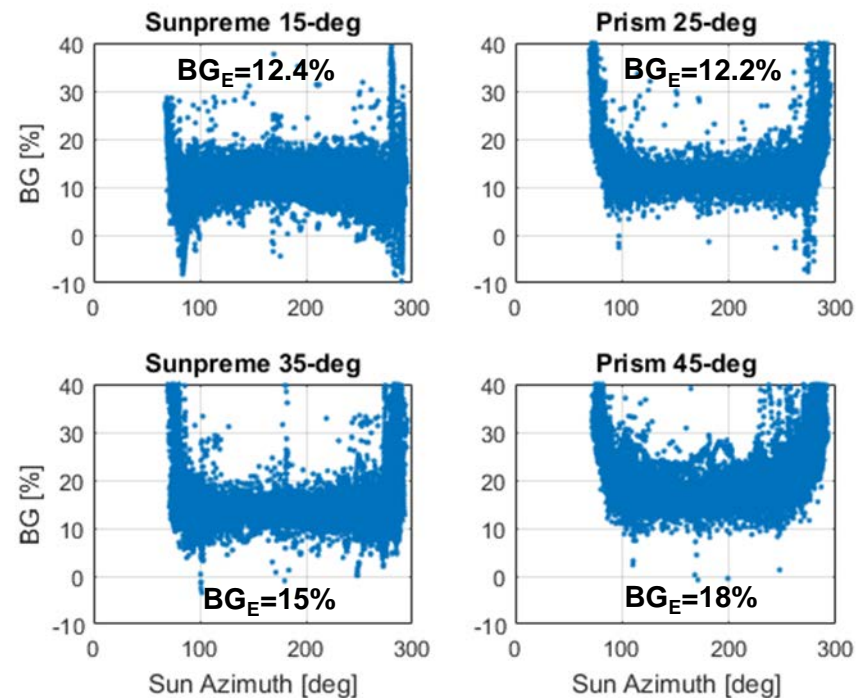
Four fixed-tilt single string arrays



- Four rows at 15°, 25°, 35°, and 45° tilt.
- Each row has one bifacial and one monofacial string of 8 modules.
- Modules alternate to minimize backside spatial irradiance bias.
- Bifacial: Prism Solar (n-Type c-SI) : R_b ~93%
- Bifacial: SunPreme (HJT/HIT) : R_b ~95%
- Monofacial: SolarWorld

- BG less for system than for single modules
- BG increases with tilt – seasonal effect (summer)

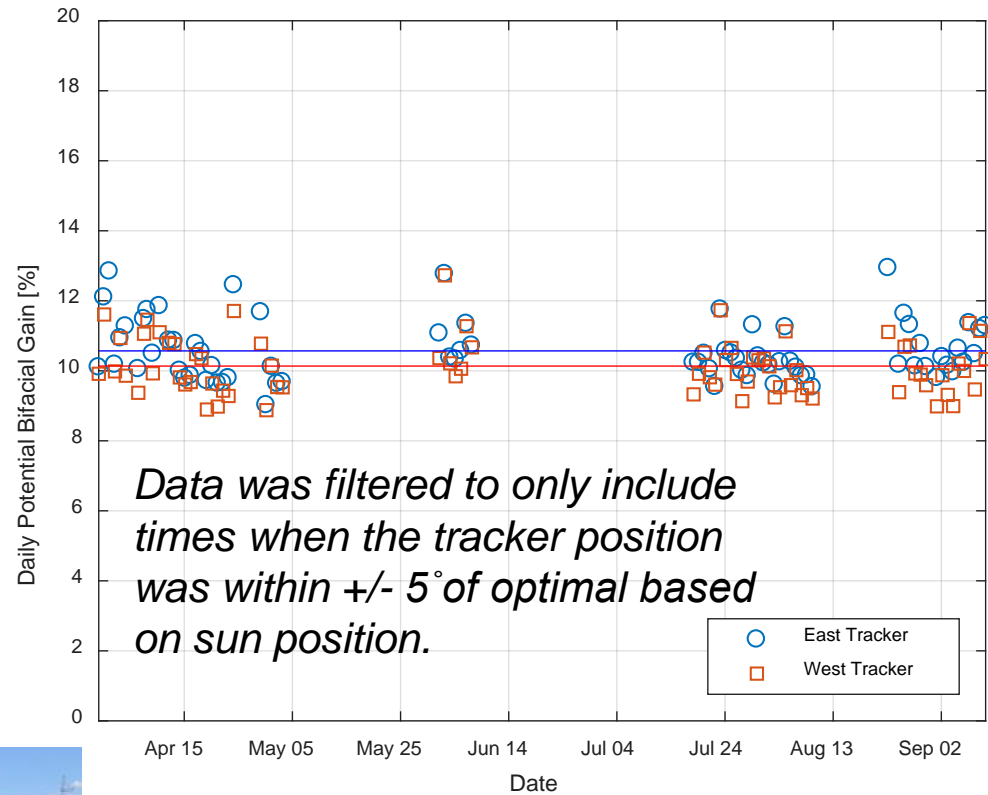
BG ~ 20% for 30-deg single module



Data from June 1 – Aug 31, 2017 11

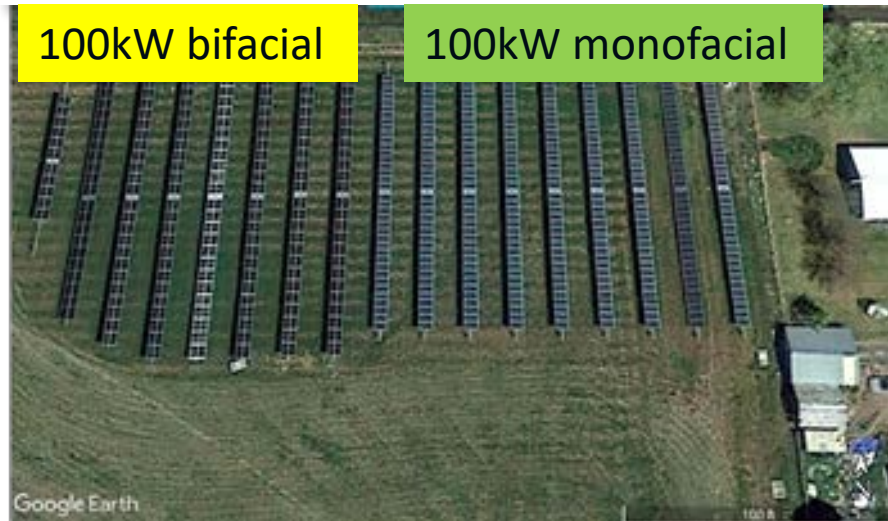
Bifacial on Single Axis Trackers

- Daily *Potential* Bifacial Gain (Energy) is estimated from front and back irradiance data using reference cells.



100kw systems on 1-axis trackers

- Side by side systems (eastern Oregon)
- Different module types: HIT bifacial vs xSi monofacial
- Comparable field IV curve measurements

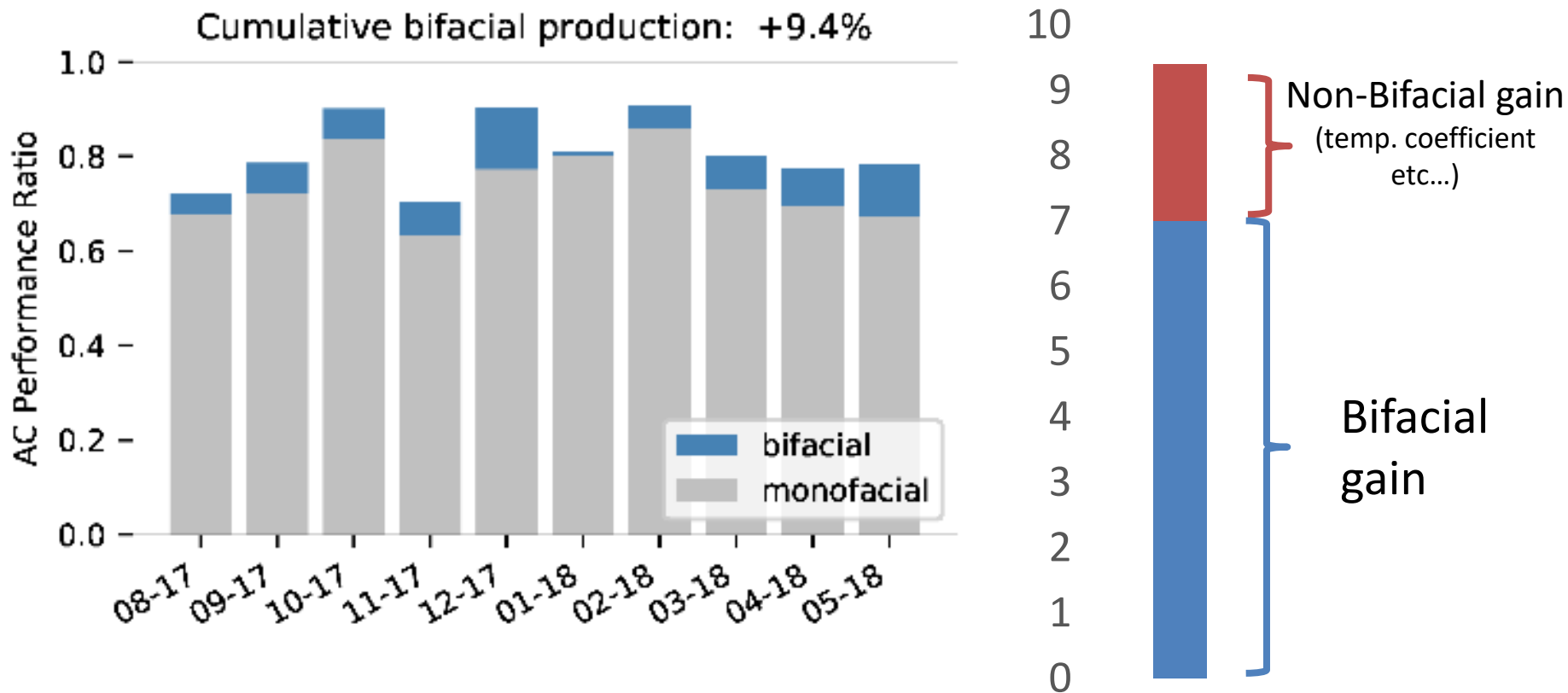


Un-like module types require adjustment for non-bifacial factors such as temp coeff. and low-light performance

$$BG_{\text{Meas},bifacial} = 100\% \times \left(\frac{PR_{bifi}}{PR_{mono}} \underbrace{\frac{PR_{mono,model}}{PR_{bifi,model}}}_{\text{Adjustment Factor}} - 1 \right)$$

1-axis tracking field comparison: bifacial HIT vs mono xSi

Measured PR was 9.4% higher for HIT bifacial vs. xSi monofacial
Question: How much of the gain was from bifaciality?

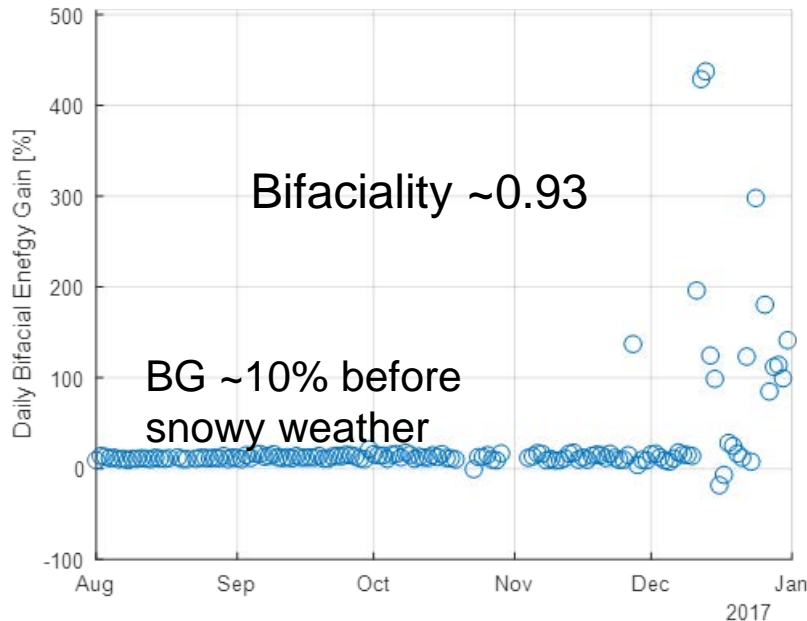


Bifacial gain comparison with model: Measured: +7%. VF model: 6.7%

Bifacial on 2-Axis Trackers (VT)



- Two 2-axis trackers each have two **strings** (one of monofacial and one of bifacial)
- Significant obstructions behind bifacial modules from tracker rack



Performance advantage during snow:

- Albedo increase
- Bifacial modules often shed snow more rapidly
- Rear side is generally clear

Example of snow shedding advantage



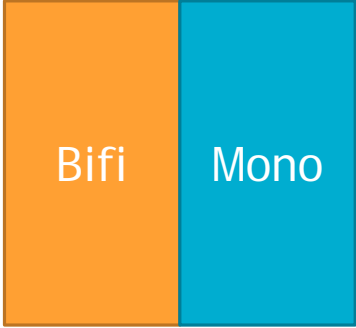
Photo from Jan 1, 2018 10:45 EST



Photo from Jan 1, 2018 14:15 EST



Photo from Jan 1, 2018 11:00 EST



SolarWorld



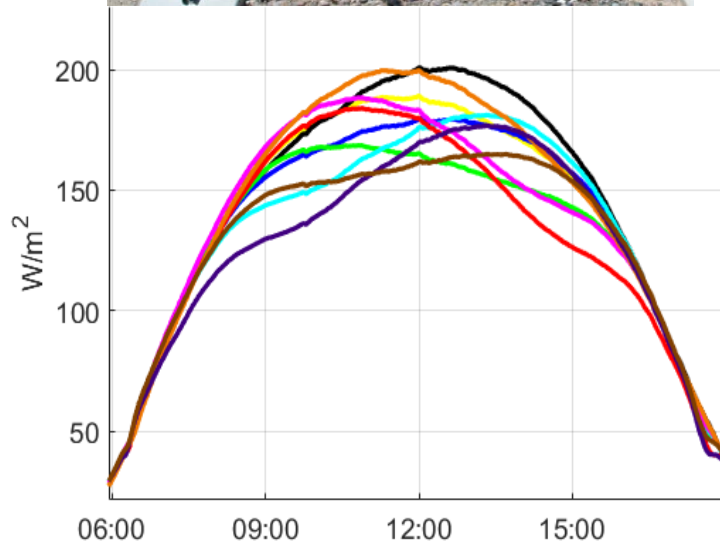
Prism

Bifacial performance modeling

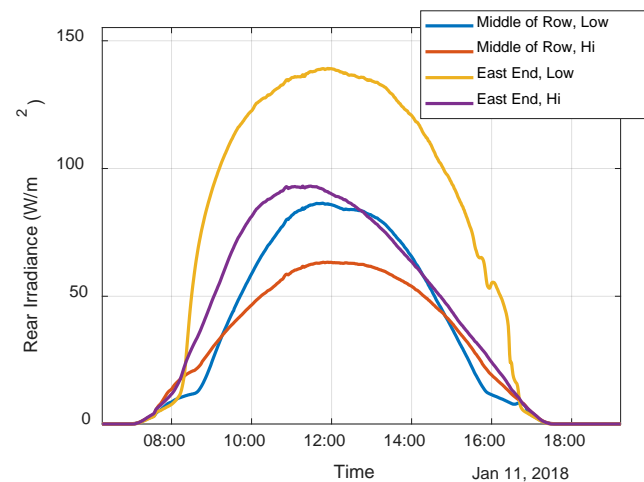
- Desired: annual simulation at hourly or better resolution with accuracy comparable to irradiance measurement uncertainty within a minute on commodity PC
- Available:
 - Fast ‘infinite row’ 2D view factor model
 - Fast ray tracing (bifacial_radiance) – calculates annual energy only
 - Detailed models: 3D cell-by-cell view factor, ray tracing
- The primary technical challenges are:
 - Modeling rear-surface irradiance accounting for nearby structures
 - Obtaining accurate values of local ground albedo
 - Modeling the effect of irradiance non-uniformity on power
 - Computationally efficient implementations

Measured rear surface irradiance

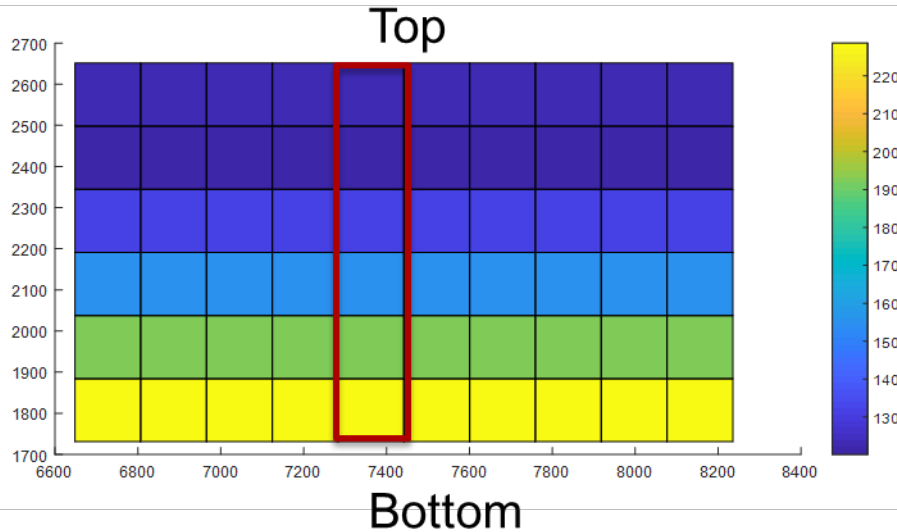
Rear irradiance across a 1m x 2m module



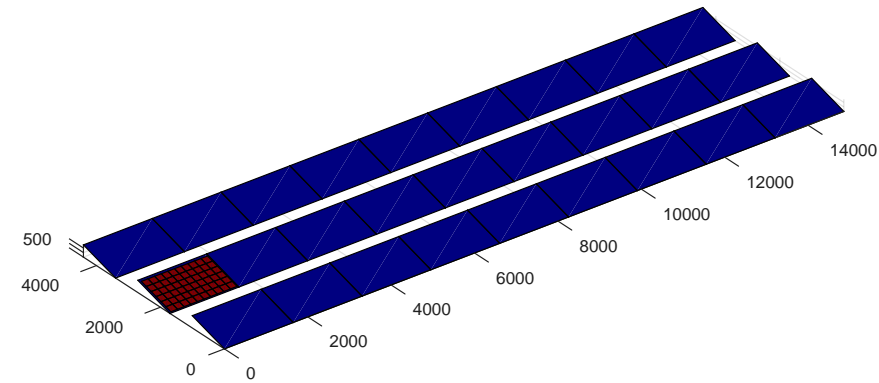
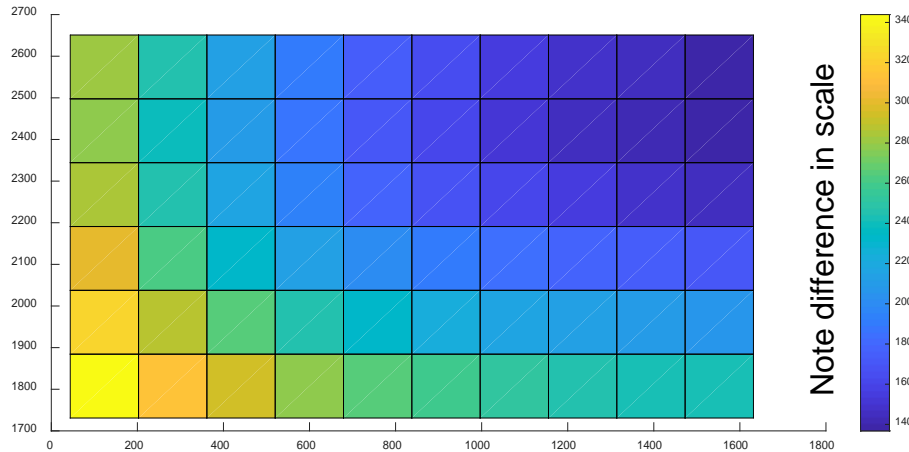
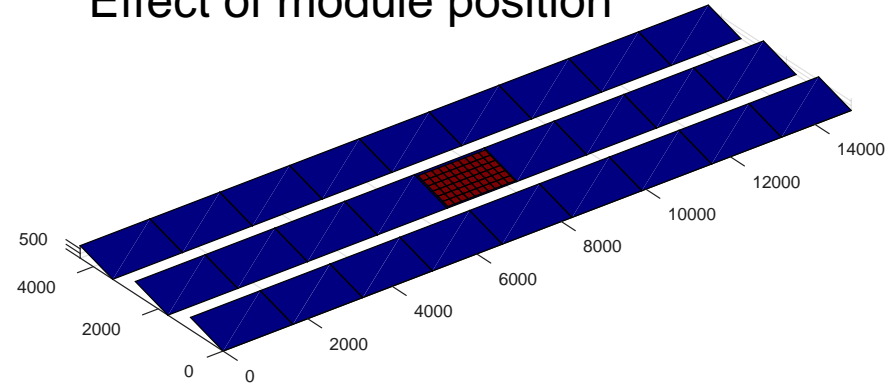
Rear irradiance across a row



Modeled rear surface irradiance



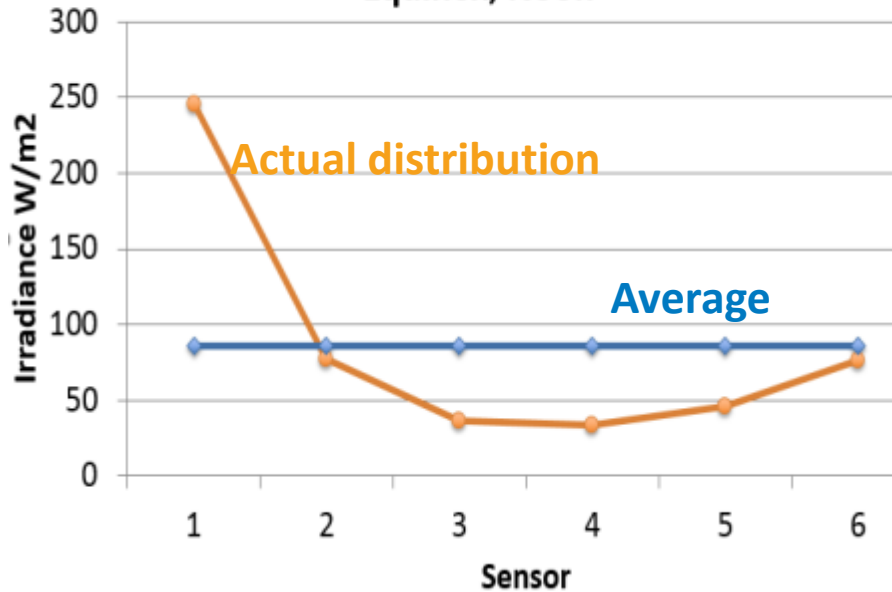
Effect of module position



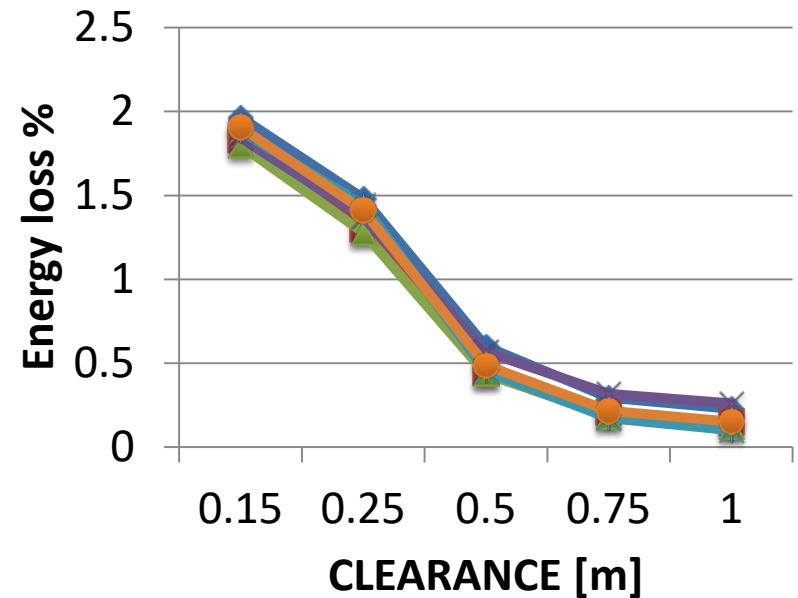
Solar noon on the spring equinox.

Rear Irradiance Distribution and Mismatch loss

Back Irradiance Spatial Distribution on Spring Equinox, Noon



C. Deline et al., Bifacial PV Performance Models: Comparison and Field Results, BiFiPV 2017 Workshop – Konstanz Germany



$$\text{Energy \%loss} = \frac{kWh_{avg} - kWh_{detailed}}{kWh_{avg}}$$

- **Current models only return an average value.** This doesn't capture additional shading or distribution mismatch loss.
- **Spatial distribution of rear irradiance** increases for low ground clearance
- **Energy loss can be significant** (e.g. 10% bifacial gain -> 8%)

Conclusions

Bifacial performance always exceeds monofacial performance in the same orientation

- 10% seems to be a floor value for Bifacial gain (for a bifacial module with $R_b \sim 93\%$) – perhaps $10\% \times \text{Bifaciality}$ could be a rule of thumb
- Bifacial advantage (measured by BG) increases substantially (and unfairly) when monofacial modules are not optimally deployed
- Extreme example: vertical, E-W bifacial modules have similar yield as latitude tilt, southward monofacial modules

Observations

- Bifacial advantage decreases from single modules (BG $\sim 20\%$) to systems (BG $\sim 12\text{-}15\%$) due to shading of nearby ground from the modules themselves
- Bifacial gain (BG) is not an ideal metric
 - LCOE may be more meaningful for two systems each designed to optimize yield within the same constraints (area, budget, obstructions)
- Optimizing bifacial yield will require careful attention to system design effects such as shadowing, mismatch mitigation and local albedo

Questions?



Clifford W. Hansen cwhanse@sandia.gov

Joshua S. Stein jsstein@sandia.gov