



# Fleet-scale PV Performance Analytics

---

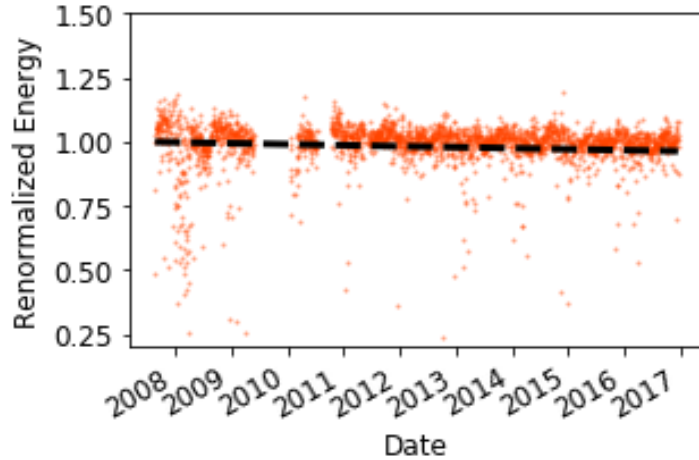
**Michael G. Deceglie**, Matthew Muller,  
Dirk C. Jordan, and Chris Deline

National Renewable Energy Laboratory

*Sandia PV Systems Symposium 2019*

# Case studies vs. fleet analysis

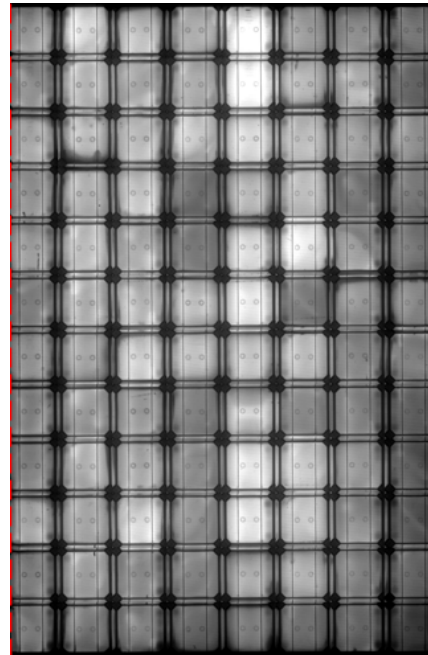
Outdoor time series



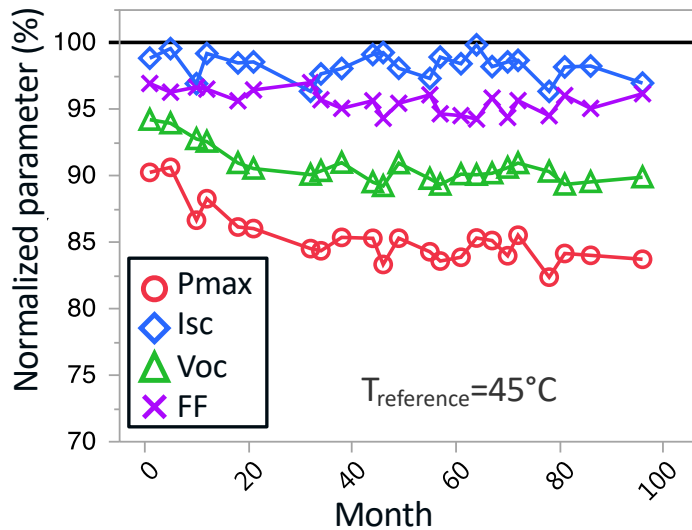
## Case Study

Detailed analysis on a small number of systems

Electroluminescence

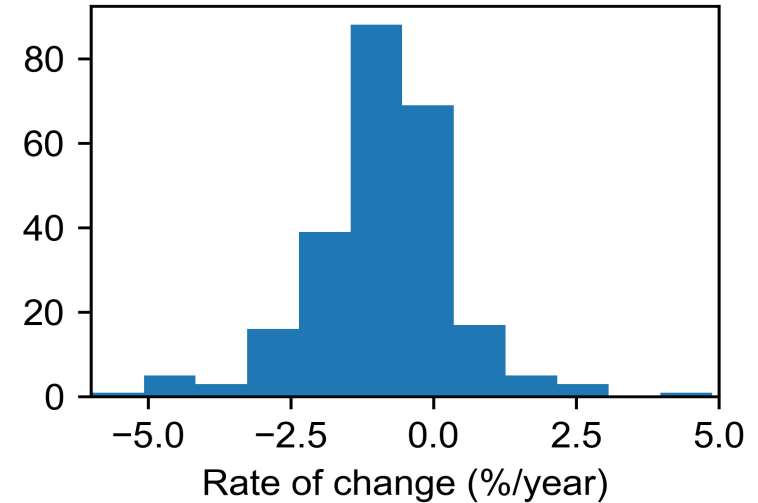


Outdoor IV



## Fleet analysis

Trends in large numbers of systems



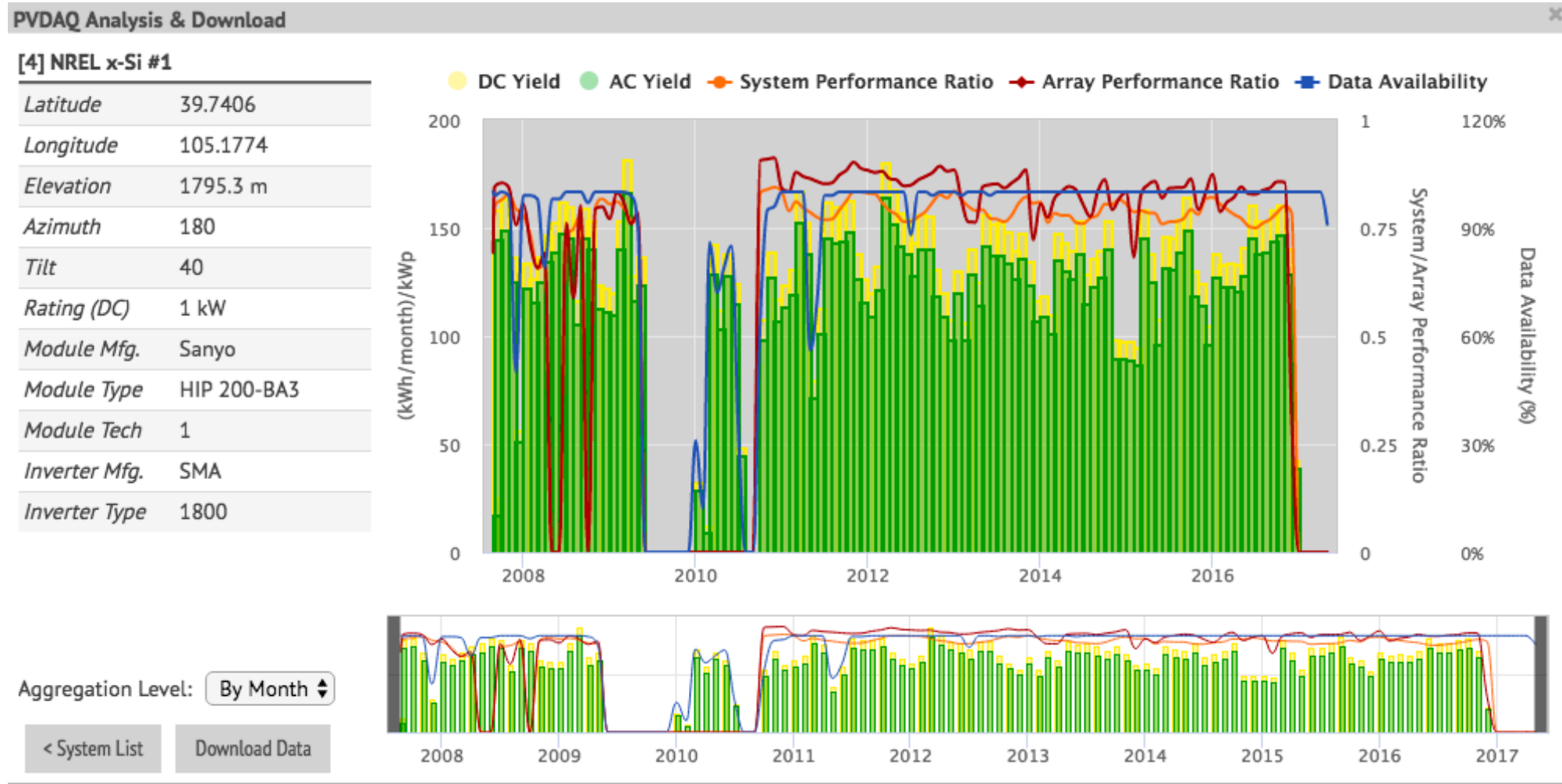
# A Tale of Two Systems

---

Challenges with fleet scale analysis

# Comparison of two systems

## System 1: Research system at NREL



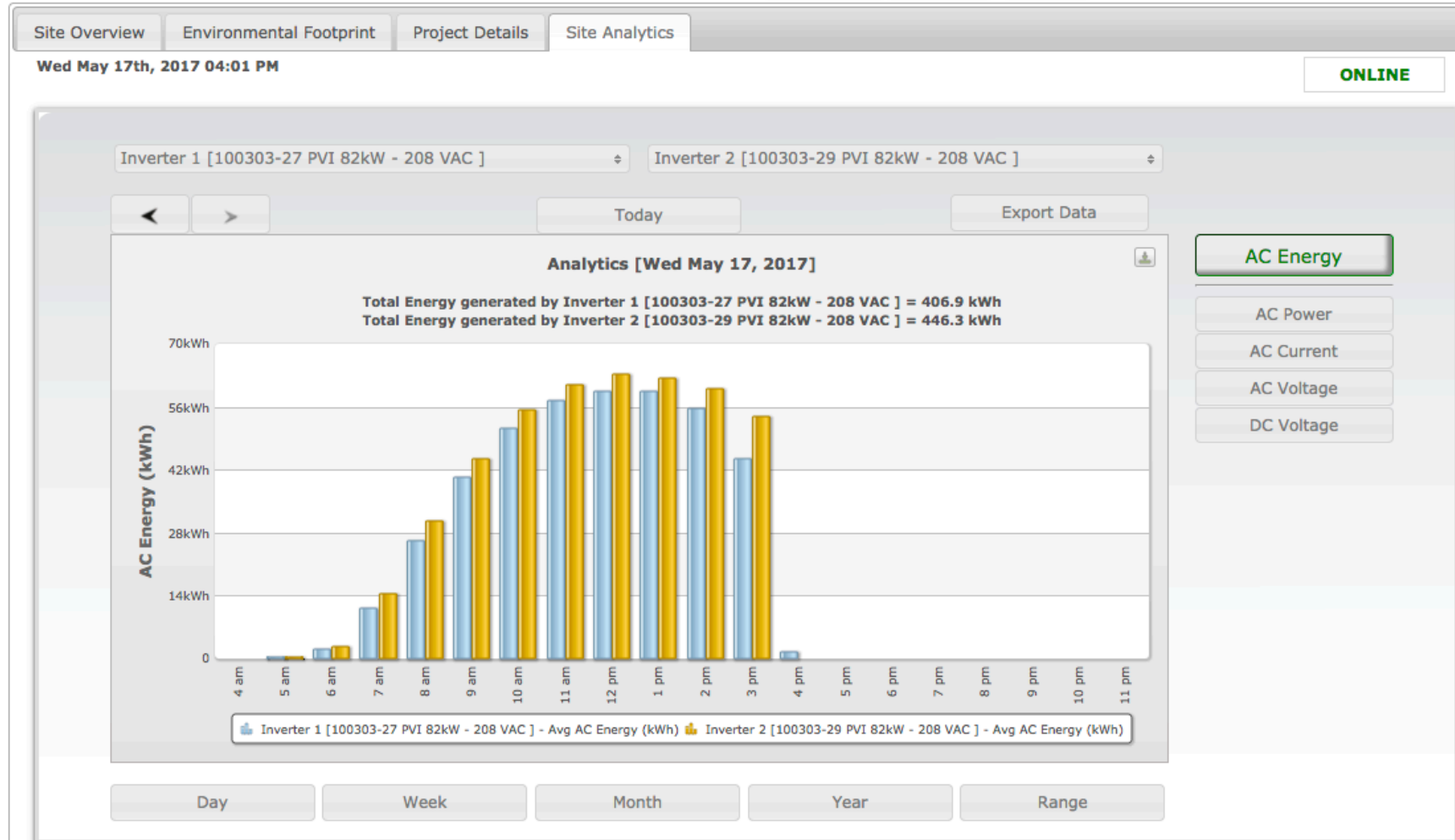
# Comparison of two systems

## System 2: Elementary School in Connecticut

### Edna C. Stevens Elementary School

[Animated View](#) [Classic View](#) [Feedback](#)

[Silk Town Roofing](#)



# Comparison of two systems

## Research system

- Metadata:
  - Location
  - System orientation
  - Module details
  - Inverter details
- Time series:
  - 1-minute
  - AC power/current/voltage
  - DC power/current/voltage
  - Ambient temperature
  - Inverter temperature
  - 3 module temperatures
  - Plane-of-array irradiance
  - DAS diagnostics

## Elementary school

- Metadata:
  - Location
  - Module details
  - Inverter details
- Time series:
  - 5-minute
  - AC power/current/voltage
  - DC voltage

# Comparison of two systems

## Research system

- Metadata:
  - Location
  - System orientation
  - 
  -
- Time
  - AC power/current/voltage
  - DC power/current/voltage
  - Ambient temperature
  - Inverter temperature
  - 3 module temperatures
  - Plane-of-array irradiance
  - DAS diagnostics

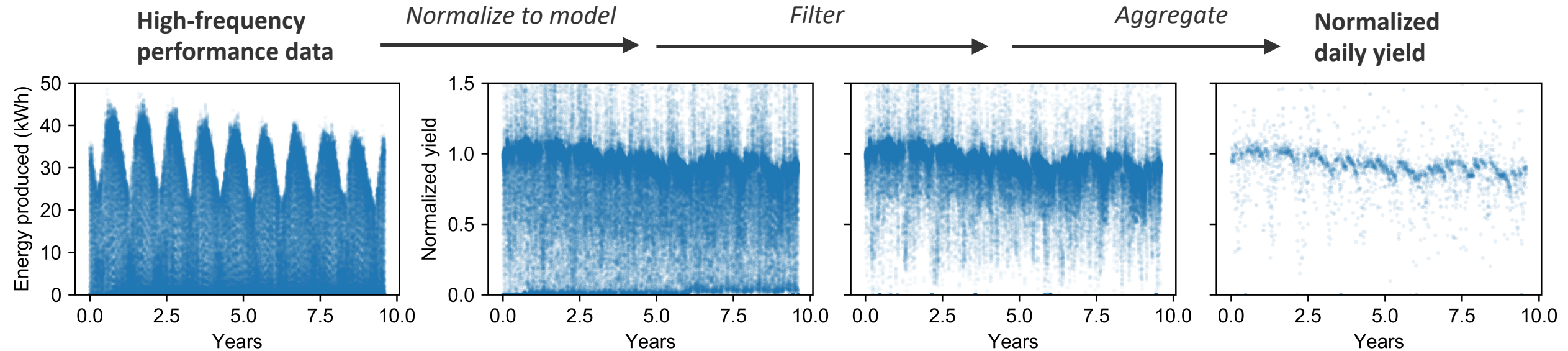
## Elementary school

- Metadata:
  - Location
  - Module details
- Time
  - AC power/current/voltage
  - DC voltage

### Goal:

Robust analytics that enable comparisons between data sets from disparate systems

# Analysis Framework



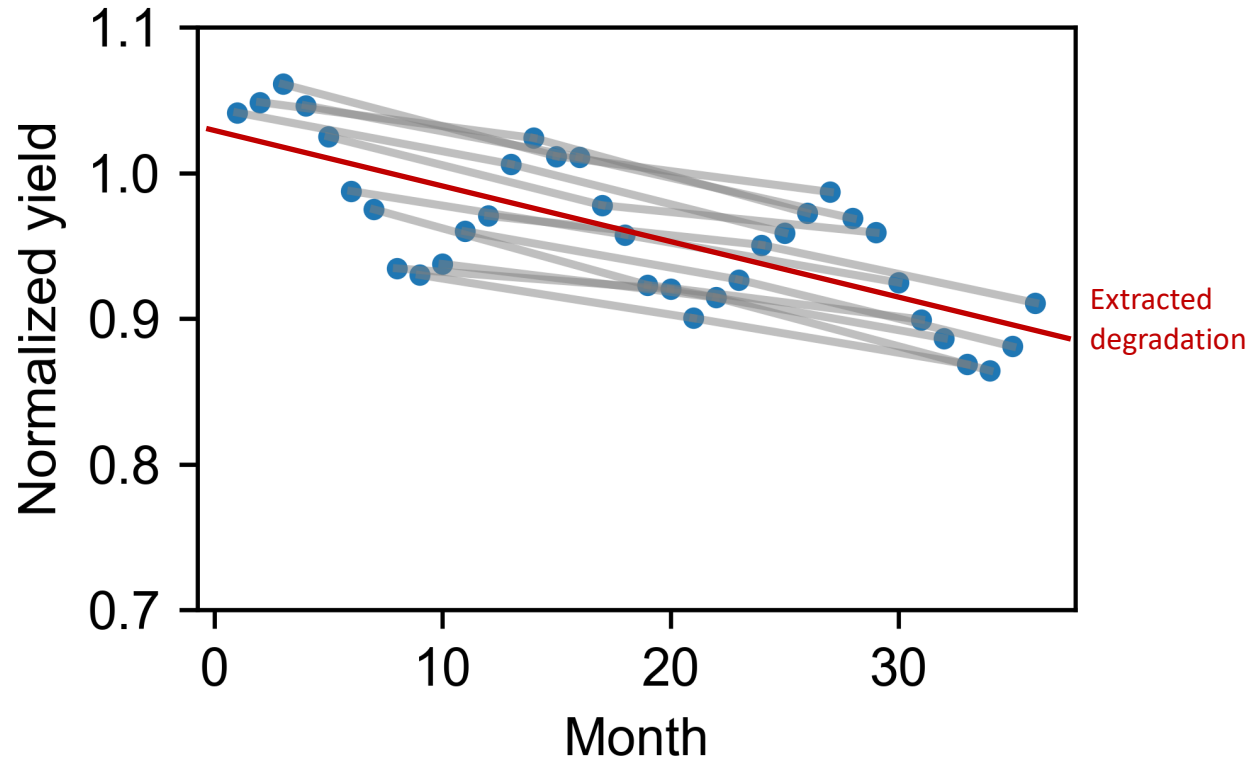
- First three steps (above) give a normalized daily yield
- Analyze the normalized yield for **soiling** and **degradation**
  - Utilize robust calculations
  - Pay attention to the uncertainty in the results
- Enabled by open source python library: RdTools ([nrel.gov/pv/rdtools.html](https://nrel.gov/pv/rdtools.html))



# Degradation analysis

---

# Year-on-year degradation analysis

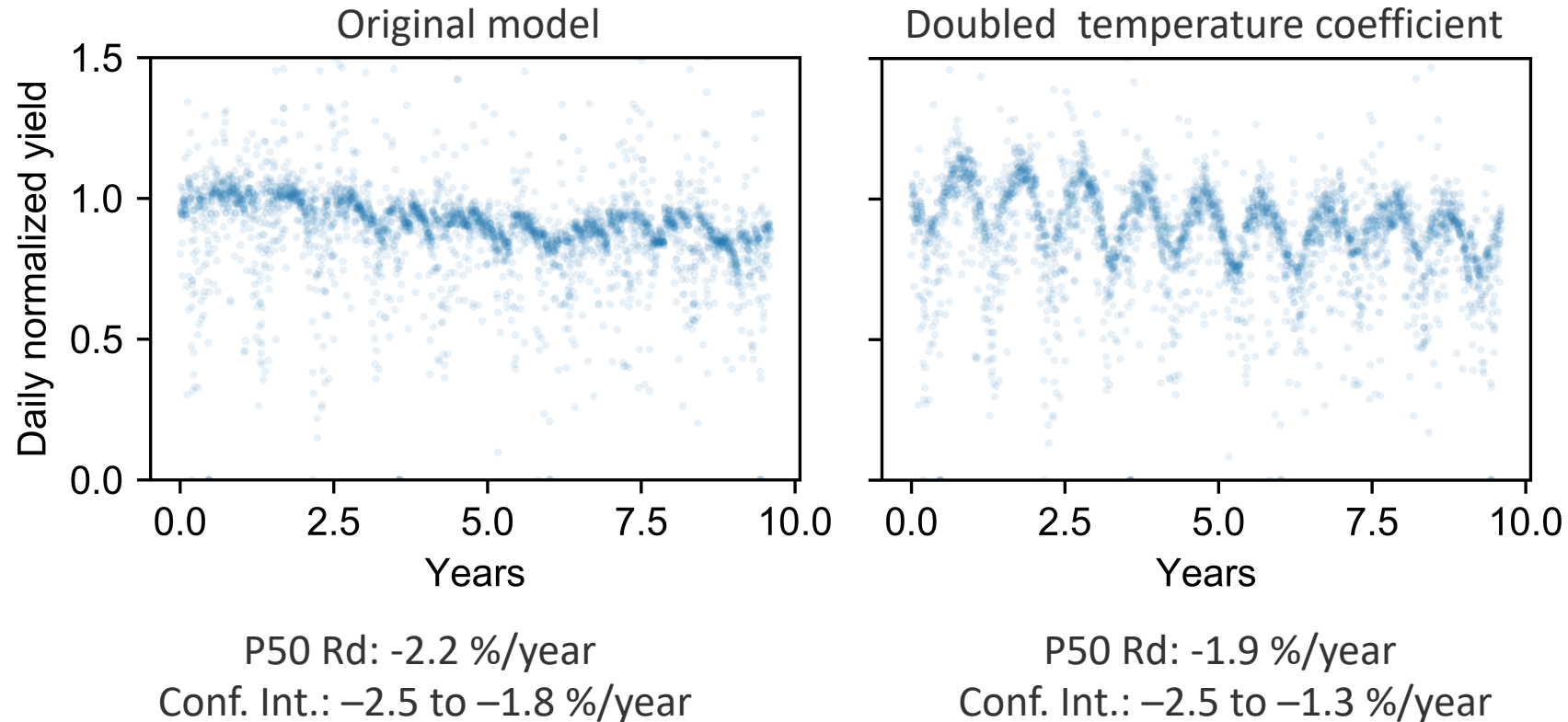


- Year-on-year is robust to seasonality and outliers
- Steps:
  - Compare each day (or week, month, etc.) to its corresponding day a year later
  - Calculate the median of all year-on-year slopes
- Pay attention to the confidence interval

E. Hasselbrink, M. Anderson, Z. Defreitas, et al., "Validation of the PVLife model using 3 million module-years of live site data," PVSC, p.0007, 2013

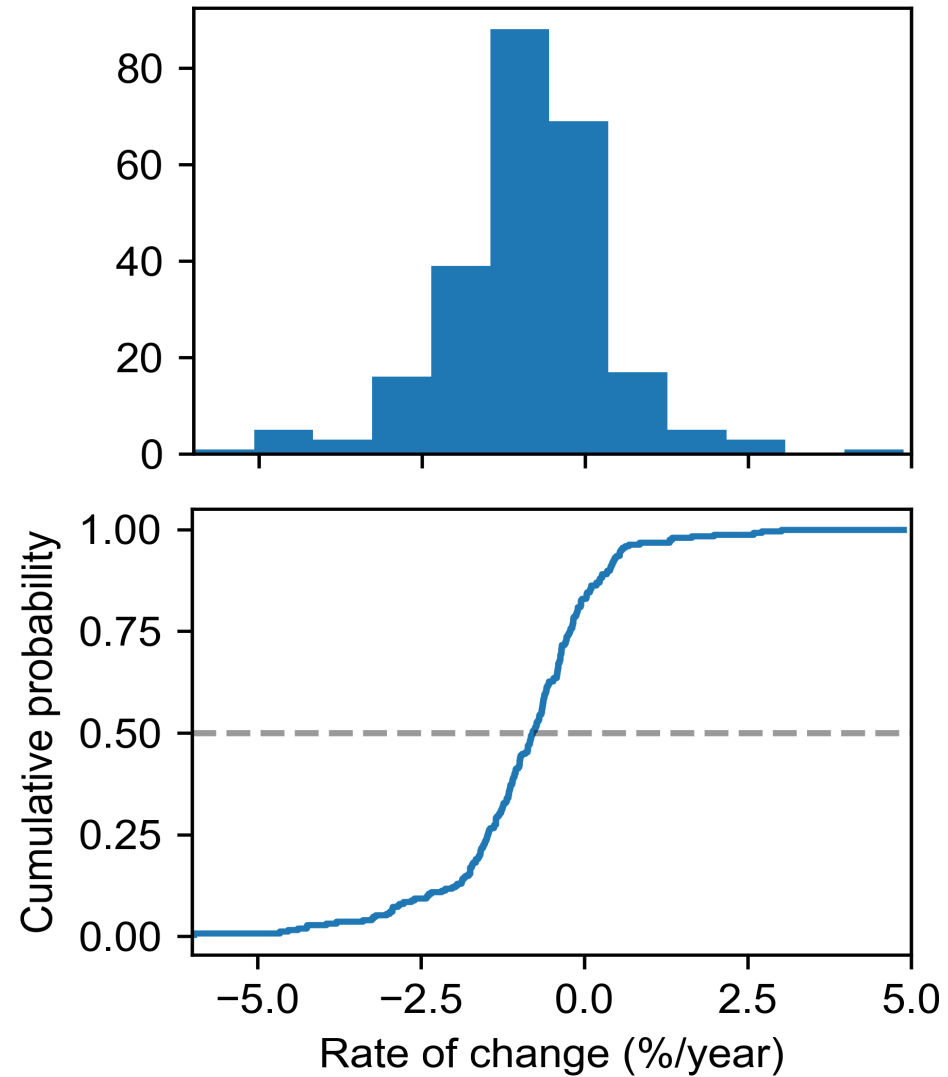
Jordan, Deceglie, & Kurtz. "PV degradation methodology comparison—A basis for a standard." PVSC, p.0273, 2016

# Year-on-year is robust



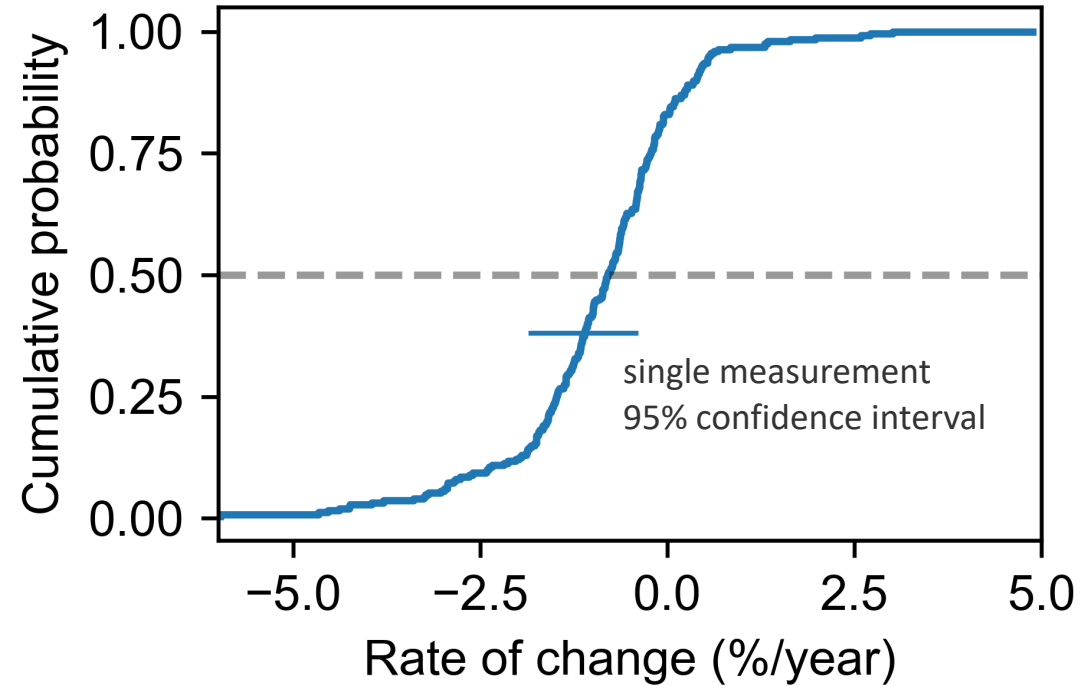
- Example: intentionally induced seasonality
- Results remain consistent
- Confidence interval appropriately expands
- **A very detailed performance model isn't needed**

# Cumulative distribution functions (CDFs)



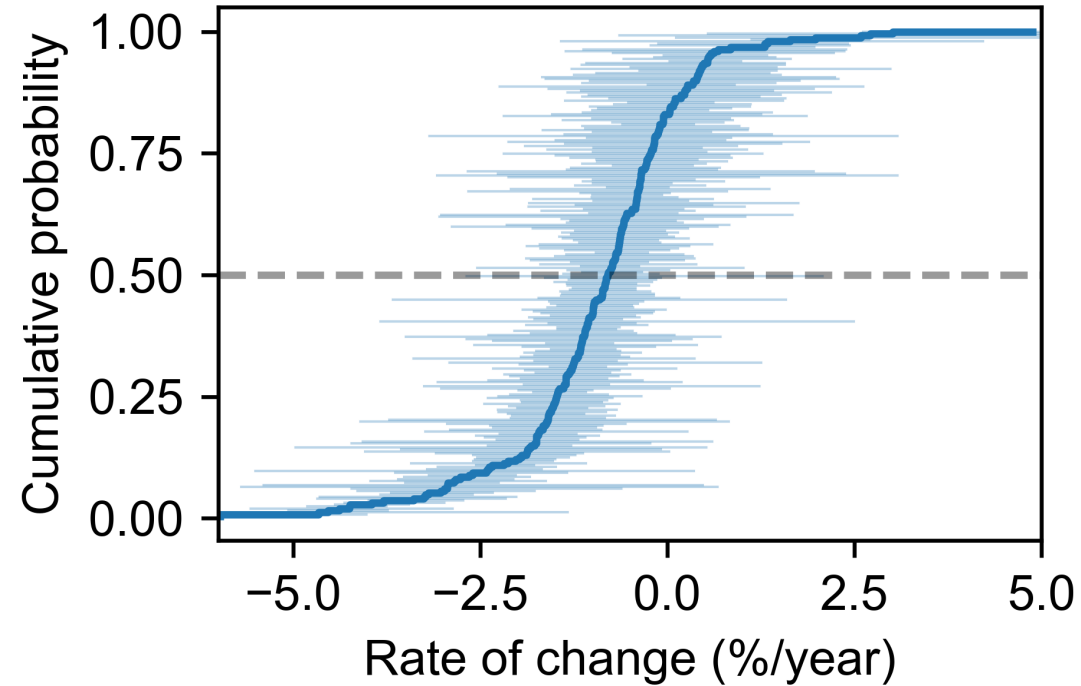
CDFs provide a way to visualize distributions, independent of bin size

# CDFs with individual confidence intervals



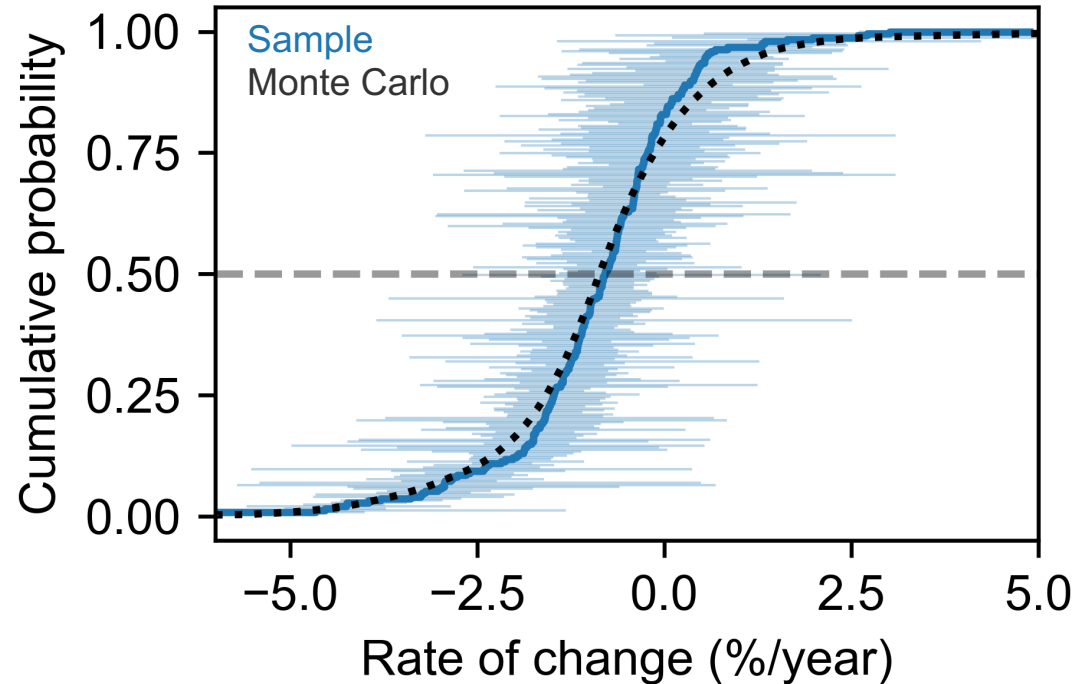
Every measurement on the CDF has its own uncertainty

# CDFs with individual confidence intervals



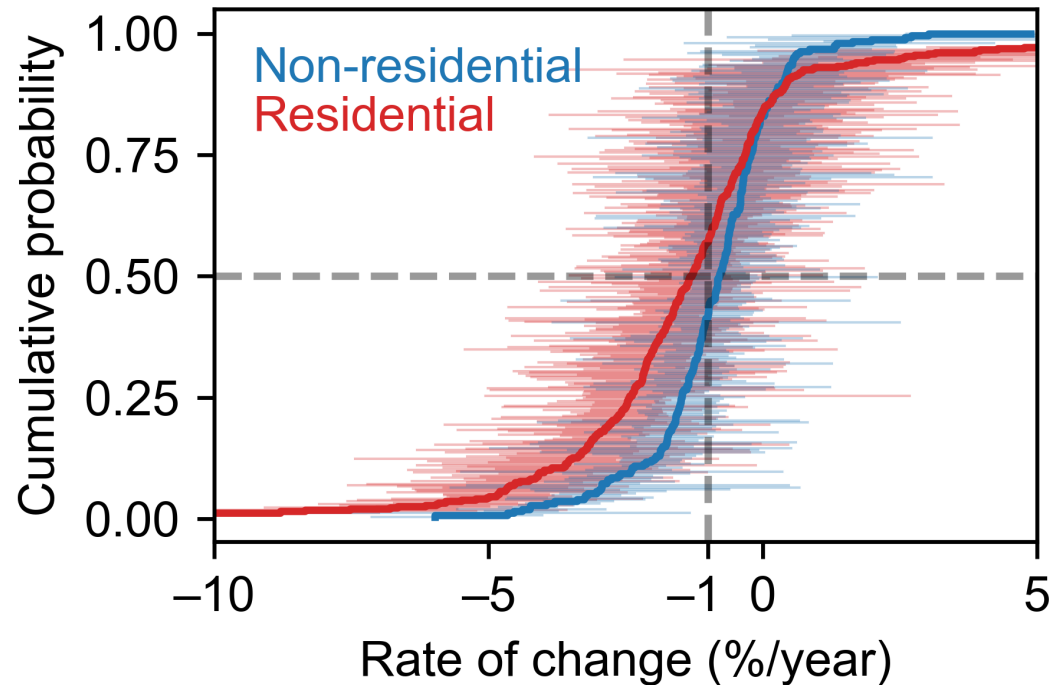
We can include each measurement's 95% confidence interval on the plot

# Uncertainty in the distribution



- Monte Carlo to include the effect of individual CIs on full distribution
- Resample the data (with replacement) within the individual confidence intervals many times
- CDF of this Monte Carlo resampling follows the original closely
- **For fleet-scale studies, we can sacrifice some site-level precision**

# Example: residential vs. non-residential



- Analyzed 634 subarrays from 503 PV systems in the United States
- 387 residential systems
- 116 larger, non-residential systems
- Negative rate of change = degradation (-1%/year indicated)
- Residential systems tended to degrade more rapidly
- 29% of residential and 38% of non-residential systems degraded slower than -0.5%/year



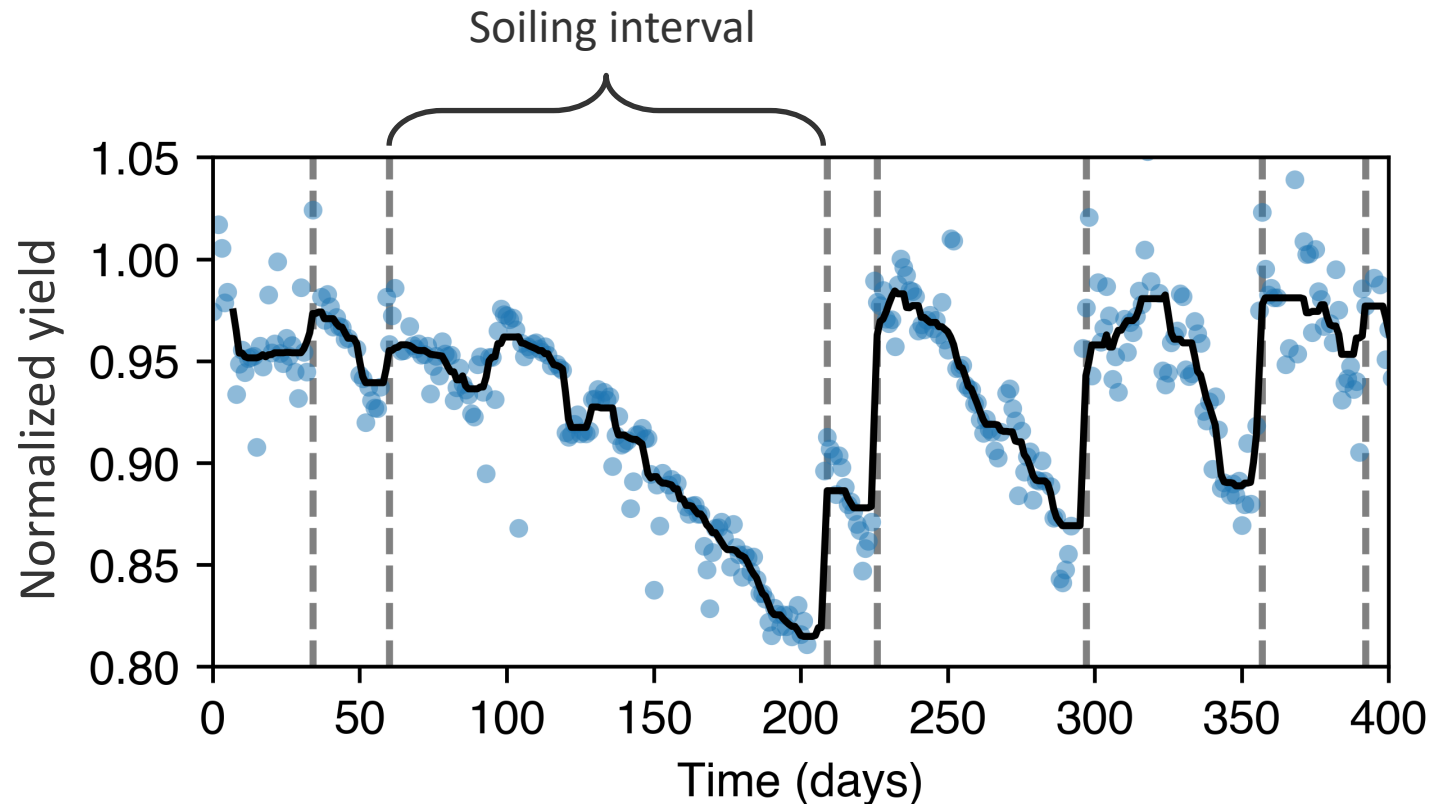
# Soiling analysis

---

Stochastic rate and recovery (SRR)

# Step 1: Detect soiling intervals

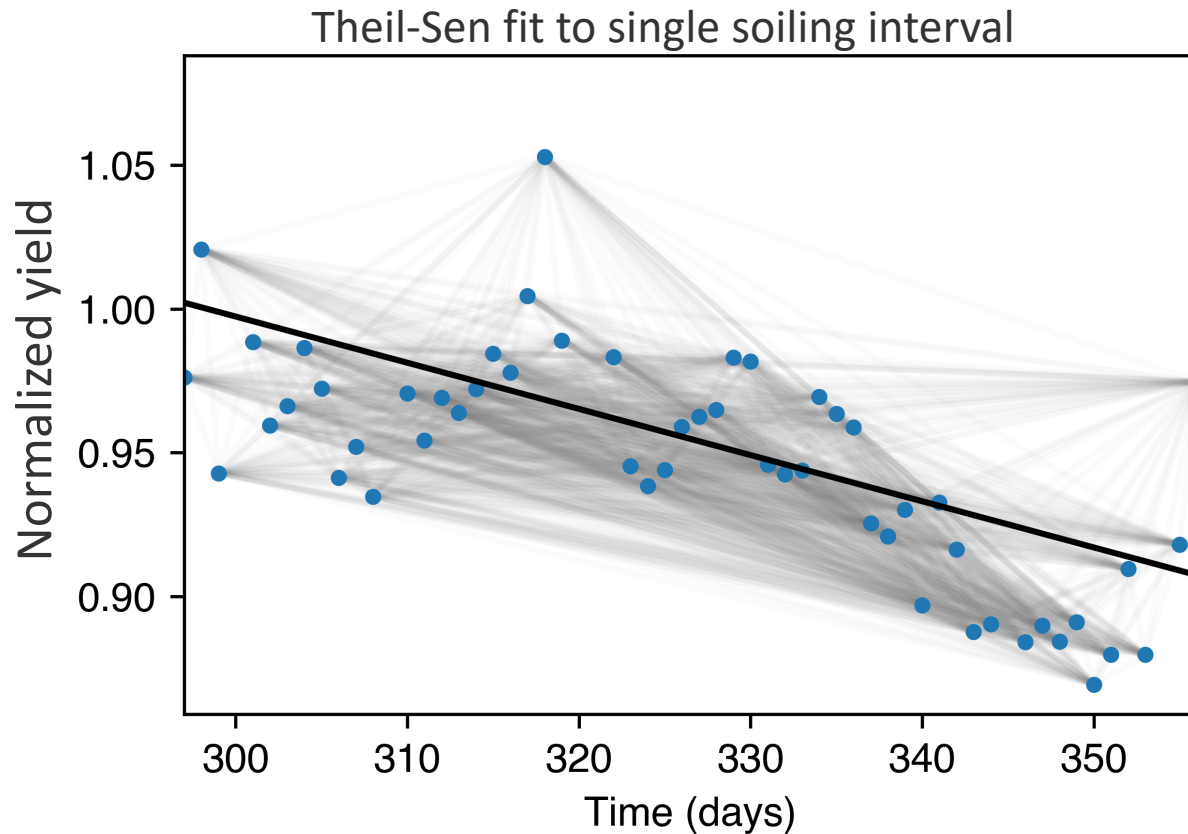
*Stochastic rate and recovery (SRR) soiling analysis*



- Operate on normalized daily yield (blue dots)
- Use rolling median (black line) to detect positive steps, interpreted as cleaning events (dashed lines)

# Step 2: Fit each soiling interval

*Stochastic rate and recovery (SRR) soiling analysis*

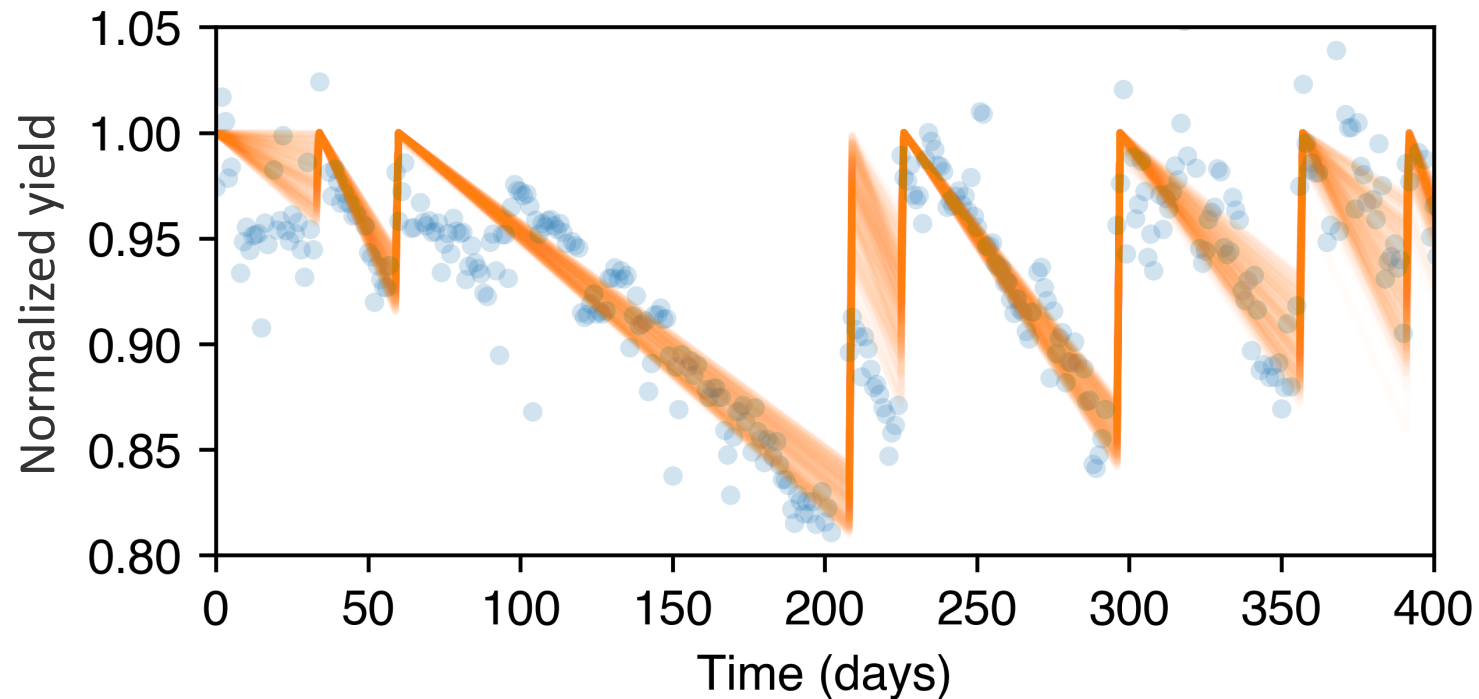


- Fit each interval identified in step 1 with the Theil-Sen method
  - Median of point-to-point slopes
  - Robust to outliers
- Keep track of the slopes, intercepts and uncertainty

# Step 3: Monte Carlo of possible profiles

*Stochastic rate and recovery (SRR) soiling analysis*

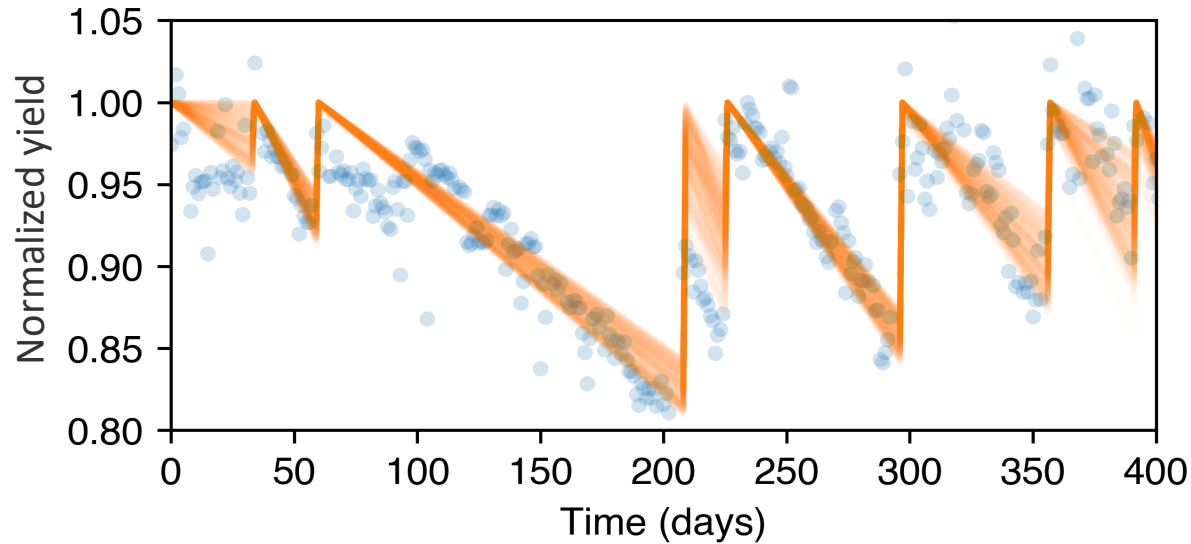
Monte Carlo realizations (orange) of possible soiling profiles



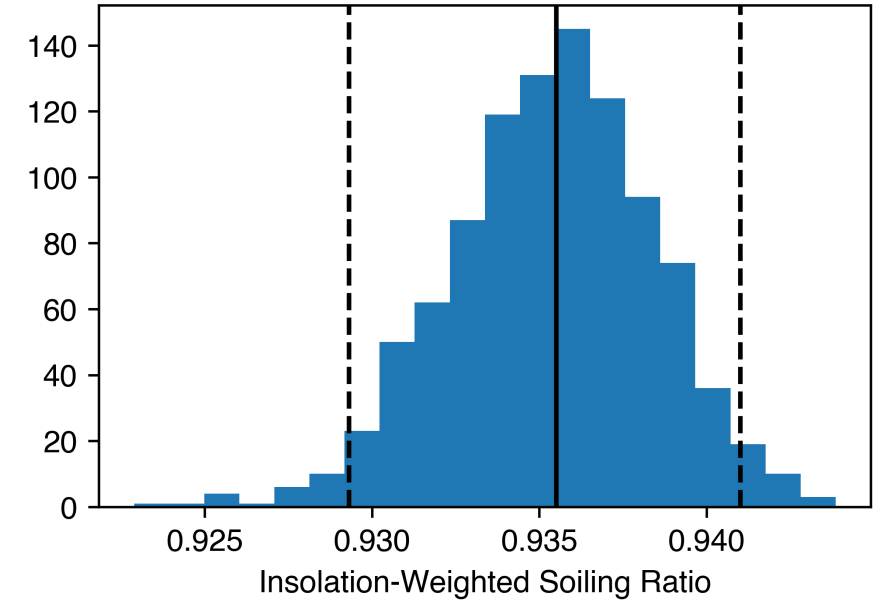
Generate possible soiling profiles from the slopes, uncertainties, and recoveries extracted for each interval

# Final step: calculate soiling loss

## Stochastic rate and recovery (SRR) soiling analysis



Extract total soiling losses



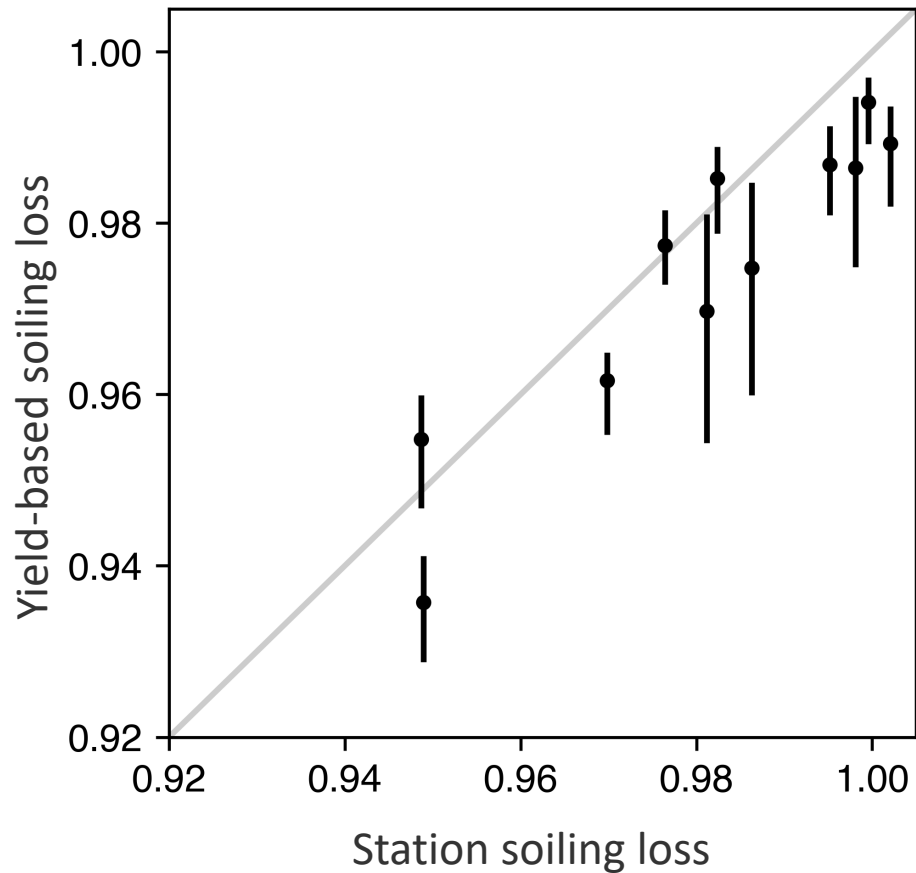
Extract soiling interval statistics

	start	end	slope	slope_low	slope_high	inferred_start_loss	inferred_end_loss	length	valid
0	2008-11-13 00:00:00+09:30	2008-12-11 00:00:00+09:30	-0.001289	-0.003674	0.000000	1.020397	0.984317	28	True
1	2008-12-12 00:00:00+09:30	2009-03-20 00:00:00+09:30	0.000000	0.000000	0.000000	0.980044	0.994708	98	False
2	2009-03-21 00:00:00+09:30	2009-03-24 00:00:00+09:30	0.000000	0.000000	0.000000	0.987630	1.023365	3	False
3	2009-03-25 00:00:00+09:30	2009-05-28 00:00:00+09:30	-0.000558	-0.000874	-0.000244	1.039202	1.003482	64	True
4	2009-05-29 00:00:00+09:30	2009-08-11 00:00:00+09:30	-0.000534	-0.000724	-0.000310	1.036823	0.997294	74	True

Analyze Monte Carlo realizations and interval fits:

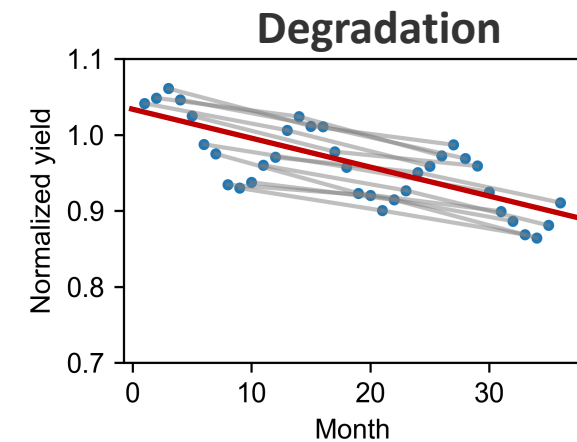
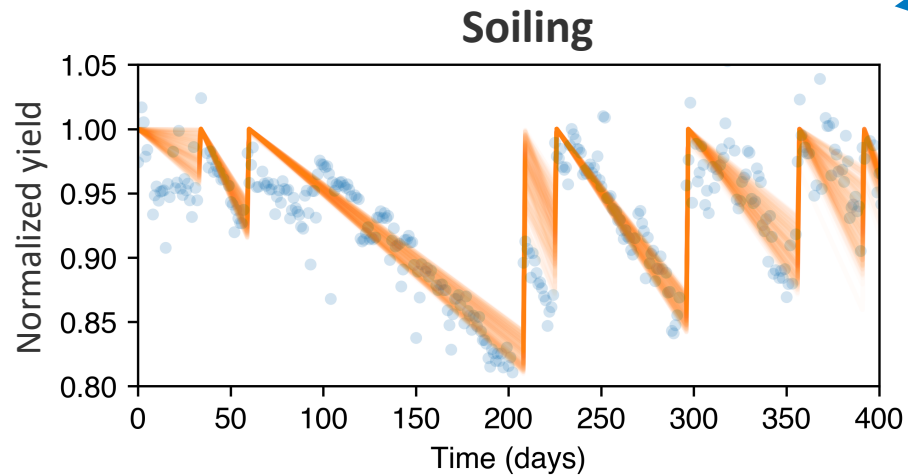
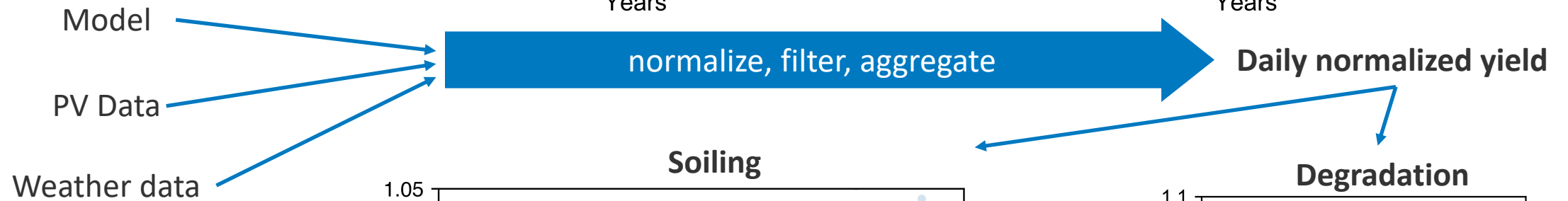
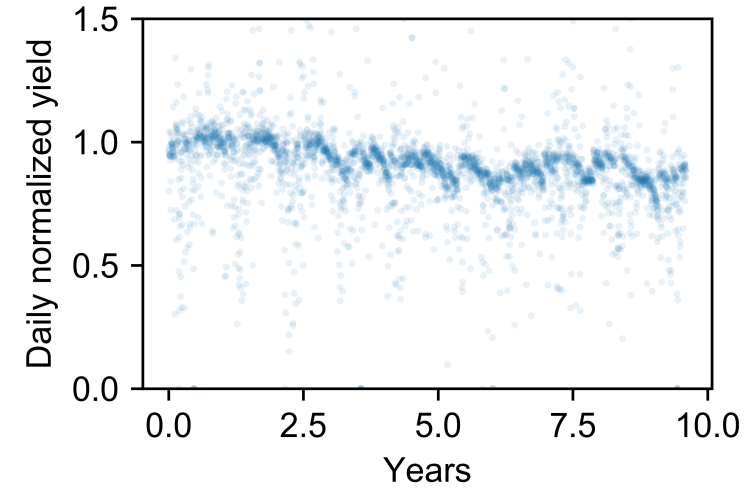
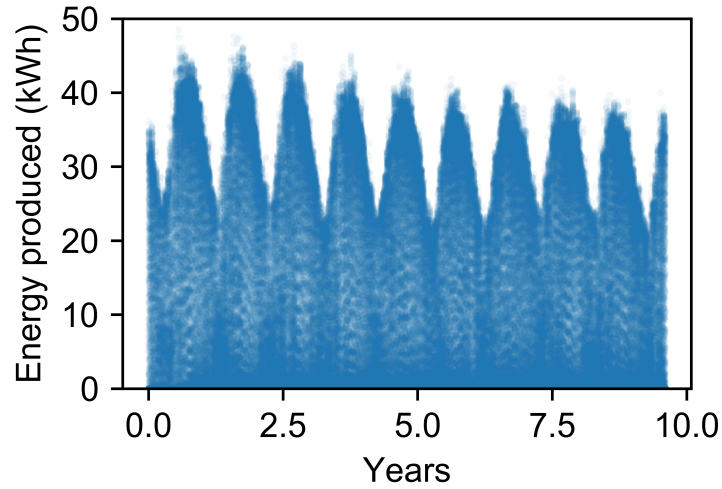
- Insolation-weighted average soiling ratio
- Statistics of each soiling interval (e.g. soiling rate)

# Soiling analysis: validation



- Applied calculations to the clean module in a soiling station
- Outperformed fixed soiling rate models
- Bias is likely in the **station** soiling ratio, due to co-soiling of modules between cleaning

# Analysis workflow



# All this is available in RdTools

NREL / rdtools

Watch 16 Star 26 Fork 20

Code Issues 15 Pull requests 0 Projects 0 Wiki Insights

PV Degradation Analysis Tools in Python

266 commits 17 branches 8 releases 7 contributors MIT

Branch: master New pull request Find file Clone or download

mdeceglie Merge pull request #77 from nb137/patch-1 Latest commit 4348939 on Apr 13

docs	use integer divide	3 months ago
rdtools	Merge remote-tracking branch 'upstream/development' into futurize	3 months ago
screenshots	screenshot images for Readme file	7 months ago
tests	Merge remote-tracking branch 'upstream/development' into futurize	3 months ago
.gitattributes	Add versioneer for compatibility.	2 years ago
.gitignore	ignore dist building files	7 months ago
LICENSE	Add NREL to copyright holders	11 months ago
MANIFEST.in	Add clearsky tamb from clearsky_temperature branch	11 months ago
README.md	README typo correction	2 months ago
setup.cfg	add readme to setup.cfg	7 months ago
setup.py	Add python 3 to classifiers	2 months ago
versioneer.py	Add versioneer for compatibility.	2 years ago

- Read me and examples: <https://github.com/NREL/rdtools>
- Install: pip install rdtools

Note: soiling methods are currently in the development branch



# Opportunity to work together

U.S. DEPARTMENT OF  
**ENERGY**

Office of  
ENERGY EFFICIENCY &  
RENEWABLE ENERGY

## PV Fleet Performance Data Initiative: Long-Term Photovoltaic (PV) System Performance Benchmark

The U.S. Department of Energy (DOE) Solar Energy Technologies Office is launching the Photovoltaics (PV) Fleet Performance Data Initiative to support the U.S. PV community by pooling plant operation data in a central database and providing a performance assessment of individual solar assets using standardized state-of-the-art methods. The analysis results will provide PV plant owners and operators with a confidential, detailed assessment of the performance of their fleet and give the broader community an aggregate benchmark for the performance of the solar fleet in the United States. These outcomes will enable more efficient operation of PV installations and improve financial assessment accuracy for current and future PV power plants.

### How to Participate

PV plant owners, operators, analysts, and researchers are invited to participate in

National Renewable Energy Laboratory (NREL), to be incorporated into a secure database (DuraMAT DataHub) maintained by NREL. In exchange for a confidential, customized individual performance analysis performed by NREL for the data partner, the initiative will periodically publish an anonymized, fleet-wide performance report on performance degradation rates extracted from all available data. Data will be protected by confidentiality agreements arranged with the participants in a standardized process, and individual participant data will not be visible to other participants or research team members unless authorized by the data owner. Data contributors will be fully engaged in defining the process of anonymizing data and reviewing the publications before they are released.

The initiative will use alternating-current power output data from medium and large (>250 kilowatts) PV installations over at least three years with a minimum resolution of 15 minutes, together with on-site plane-of-array

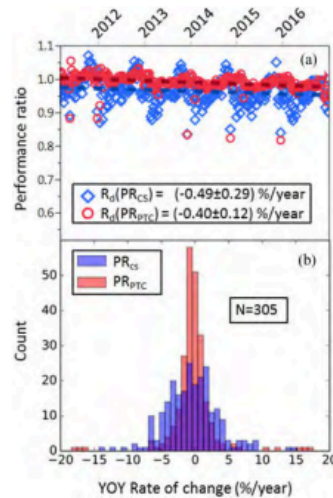


Figure 1. (a) Performance ratio of a single system at NREL. (b) Year-on-year aggregated histograms for the respective performance ratios (PR) calculated by RdTools. Ref: Jordan et al. *IEEE Journal of Photovoltaics* 8(2): 525, 2018.

Learn about your fleet's performance or come help with the analysis!

## NREL Job Postings

### Search for Jobs

Q PV fleet

Filter

### 2 Results

#### PV Fleets - Data Science Researcher II

Golden, CO | R4788 | Posted 4 Days Ago

#### PV Fleets - Data Science Researcher IV

Golden, CO | R4791 | Posted 4 Days Ago

<https://www.energy.gov/eere/solar/downloads/photovoltaic-fleet-performance-data-initiative>

Contacts: Tassos.Golnas@ee.doe.gov and  
Inna.Kozinsky@ee.doe.gov

<https://www.nrel.gov/careers/find-job.html>

# Conclusion

- Fleet-scale analysis enabled by open-source RdTools elucidates system degradation and soiling trends
- Challenges with soiling and drifting sensors
  - Clearsky detection and filtering:
    - *Jordan et al. JPV 8(2) pp. 525–531*
    - *Ellis et al. “Automatic Detection of Clear-sky Periods From Irradiance Data” JPV (in press)*
  - Soiled sensors :
    - *DeFreitas et al. “Evaluating the Accuracy of Various Irradiance Models in Detecting Soiling of Irradiance Sensors” PVSC 2019 (in prep)*
- We can tolerate moderate system-by-system uncertainty in fleet-scale analyses
- Use lowest-common denominator analysis
- Raise the common denominator: invest in data quality upfront:
  - Standard and documented naming conventions
  - Standard and documented DAQ systems and met packages
  - Standard and documented aggregation/averaging and time zone information
- Fleet analyses can identify underperforming systems for further investigation

# Thank you

---

[www.nrel.gov](http://www.nrel.gov)

This work was authored by the National Renewable Energy Laboratory, operated by Alliance for Sustainable Energy, LLC, for the U.S. Department of Energy (DOE) under Contract No. DE-AC36-08GO28308. Funding provided by U.S. Department of Energy Office of Energy Efficiency and Renewable Energy Solar Energy Technologies Office under agreement numbers 30311, 30295, and 34348. The views expressed in the presentation do not necessarily represent the views of the DOE or the U.S. Government. The U.S. Government retains and the publisher, by accepting the article for publication, acknowledges that the U.S. Government retains a nonexclusive, paid-up, irrevocable, worldwide license to publish or reproduce the published form of this work, or allow others to do so, for U.S. Government purposes.

